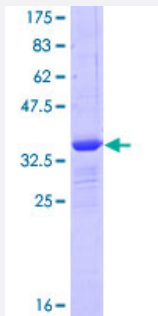


GLIPR1 (Human) Recombinant Protein (Q01)

Catalog # H00011010-Q01

Size 25 ug, 10 ug

Applications



Specification

Product Description	Human GLIPR1 partial ORF (NP_006842, 23 a.a. - 99 a.a.) recombinant protein with GST-tag at N-terminal.
Sequence	NILPDIENTDFIKDCVRIHNKFRSEVKPTASDMLYMTWDPALAQIAKAWASNCQFSHNTRLKPPHK LHPNFTSLGEN
Host	Wheat Germ (in vitro)
Theoretical MW (kDa)	34.21
Interspecies Antigen Sequence	Mouse (68); Rat (63)
Preparation Method	in vitro wheat germ expression system
Purification	Glutathione Sepharose 4 Fast Flow
Quality Control Testing	12.5% SDS-PAGE Stained with Coomassie Blue.
Storage Buffer	50 mM Tris-HCl, 10 mM reduced Glutathione, pH=8.0 in the elution buffer.
Storage Instruction	Store at -80°C. Aliquot to avoid repeated freezing and thawing.
Note	Best use within three months from the date of receipt of this protein.

Applications

- Enzyme-linked Immunoabsorbent Assay
- Western Blot (Recombinant protein)
- Antibody Production
- Protein Array

Gene Info — GLIPR1

Entrez GeneID [11010](#)

GeneBank Accession# [NM_006851](#)

Protein Accession# [NP_006842](#)

Gene Name GLIPR1

Gene Alias CRISP7, GLIPR, RTVP1

Gene Description GLI pathogenesis-related 1

Omim ID [602692](#)

Gene Ontology [Hyperlink](#)

Gene Summary This gene encodes a protein with similarity to both the pathogenesis-related protein (PR) superfamily and the cysteine-rich secretory protein (CRISP) family. Increased expression of this gene is associated with myelomocytic differentiation in macrophage and decreased expression of this gene through gene methylation is associated with prostate cancer. The protein has proapoptotic activities in prostate and bladder cancer cells. This gene is a member of a cluster on chromosome 12 containing two other similar genes. Alternatively spliced variants which encode different protein isoforms have been described; however, not all variants have been fully characterized. [provided by RefSeq]

Other Designations GLI pathogenesis-related 1 (glioma)|glioma pathogenesis-related protein 1|related to testis-specific, vespid, and pathogenesis proteins 1|testes-specific vespid and pathogenesis protein 1

Disease

- [Cardiovascular Diseases](#)

- [Diabetes Mellitus](#)
- [Edema](#)