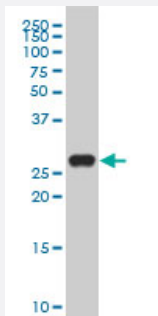


GLIPR1 polyclonal antibody (A01)

Catalog # H00011010-A01

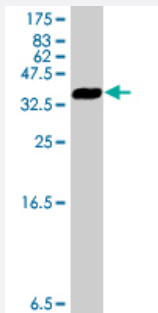
Size 50 uL

Applications



Western Blot (Cell lysate)

GLIPR1 polyclonal antibody (A01), Lot # 060509JCS1 Western Blot analysis of GLIPR1 expression in U-2 OS (Cat # L022V1).



Western Blot detection against Immunogen (34.58 KDa) .

Specification

Product Description	Mouse polyclonal antibody raised against a partial recombinant GLIPR1.
Immunogen	GLIPR1 (NP_006842, 23 a.a. ~ 99 a.a) partial recombinant protein with GST tag.
Sequence	NILPDIENEDFIKDCVRIHNKFRSEVKPTASDMLYMTWDPALAQIAKAWASNCQFSHNTRLKPPHK LHPNFTSLGEN
Host	Mouse
Reactivity	Human
Interspecies Antigen Sequence	Mouse (68); Rat (63)

Quality Control Testing

Antibody Reactive Against Recombinant Protein.
Western Blot detection against Immunogen (34.58 KDa) .

Storage Buffer

50 % glycerol

Storage Instruction

Store at -20°C or lower. Aliquot to avoid repeated freezing and thawing.

Applications

- Western Blot (Cell lysate)

GLIPR1 polyclonal antibody (A01), Lot # 060509JCS1 Western Blot analysis of GLIPR1 expression in U-2 OS (Cat # L022V1).

[Protocol Download](#)

- Western Blot (Recombinant protein)

[Protocol Download](#)

- ELISA

Gene Info — GLIPR1

Entrez GeneID

[11010](#)

GeneBank Accession#

[NM_006851](#)

Protein Accession#

[NP_006842](#)

Gene Name

GLIPR1

Gene Alias

CRISP7, GLIPR, RTVP1

Gene Description

GLI pathogenesis-related 1

Omim ID

[602692](#)

Gene Ontology

[Hyperlink](#)

Gene Summary

This gene encodes a protein with similarity to both the pathogenesis-related protein (PR) superfamily and the cysteine-rich secretory protein (CRISP) family. Increased expression of this gene is associated with myelomocytic differentiation in macrophage and decreased expression of this gene through gene methylation is associated with prostate cancer. The protein has proapoptotic activities in prostate and bladder cancer cells. This gene is a member of a cluster on chromosome 12 containing two other similar genes. Alternatively spliced variants which encode different protein isoforms have been described; however, not all variants have been fully characterized. [provided by RefSeq]

Other Designations

GLI pathogenesis-related 1 (glioma)|glioma pathogenesis-related protein 1|related to testis-specific, vespid, and pathogenesis proteins 1|testes-specific vespid and pathogenesis protein 1

Publication Reference

- [GLIPR1 expression is reduced in multiple myeloma but is not a tumour suppressor in mice.](#)

Friend N, Noll JE, Opperman KS, Clark KC, Mrozik KM, Vandyke K, Hewett DR, Zannettino ACW.

PLoS One 2020 Jan; 15(1):e0228408.

Application: WB-Ti, WB-Tr, Human, Mouse, 5TGM1 cells, Bone marrow, H929 cells, Spleens

Disease

- [Cardiovascular Diseases](#)
- [Diabetes Mellitus](#)
- [Edema](#)