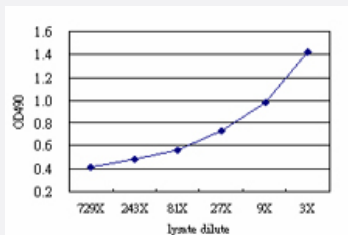


KIF2C (Human) Matched Antibody Pair

Catalog # H00011004-AP51

Size 1 Set

Applications



Sandwich ELISA detection sensitivity ranging from approximately 81x to 3x dilution of the KIF2C 293T overexpression lysate (non-denatured).

Specification

Product Description

This antibody pair set comes with a matched antibody pair to detect and quantify the protein level of human KIF2C.

Reactivity

Human

Quality Control Testing

Standard curve using KIF2C 293T overexpression lysate (non-denatured) as an analyte. Sandwich ELISA detection sensitivity ranging from approximately 81x to 3x dilution of the KIF2C 293 T overexpression lysate (non-denatured).

Supplied Product

Antibody pair set content:

1. Capture antibody: mouse monoclonal anti-KIF2C (100 ug)
2. Detection antibody: rabbit purified polyclonal anti-KIF2C (50 ug)

*Reagents are sufficient for at least 3-5 x 96 well plates using recommended protocols.

Storage Instruction

Store reagents of the antibody pair set at -20°C or lower. Please aliquot to avoid repeated freeze thaw cycle. Reagents should be returned to -20°C storage immediately after use.

Applications

- ELISA Pair (Transfected lysate)

[Protocol Download](#)

Gene Info — KIF2C

Entrez GeneID [11004](#)**Gene Name** KIF2C**Gene Alias** KNSL6, MCAK**Gene Description** kinesin family member 2C**Omim ID** [604538](#)**Gene Ontology** [Hyperlink](#)

Gene Summary The protein encoded by this gene is a member of kinesin-like protein family. Proteins of this family are microtubule-dependent molecular motors that transport organelles within cells and move chromosomes during cell division. This protein is important for anaphase chromosome segregation and may be required to coordinate the onset of sister centromere separation. [provided by RefSeq]

Other Designations OTTHUMP00000010066|kinesin-like 6|mitotic centromere-associated kinesin