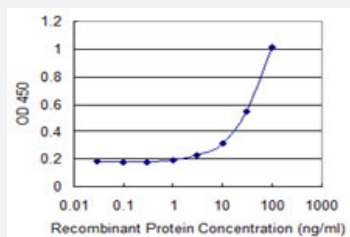


SLC27A2 monoclonal antibody (M01), clone 1F1

Catalog # H00011001-M01

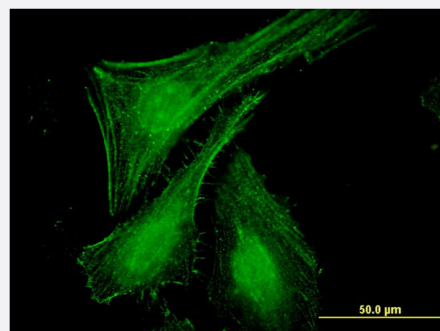
Size 100 ug

Applications



Sandwich ELISA (Recombinant protein)

Detection limit for recombinant GST tagged SLC27A2 is 1 ng/ml as a capture antibody.



Immunofluorescence

Immunofluorescence of monoclonal antibody to SLC27A2 on HeLa cell .
[antibody concentration 10 ug/ml]

Specification

Product Description

Mouse monoclonal antibody raised against a partial recombinant SLC27A2.

Immunogen

SLC27A2 (NP_003636, 25 a.a. ~ 123 a.a) partial recombinant protein with GST tag. MW of the GST tag alone is 26 KDa.

Sequence

YFFQDIGYFLKVAAGRRVRSYGQRRPARTILRAFLEKARQTPHKPFLFRDETLTYAQVDRRSNQ
VARALHDHLGLRQGDCVALLMGNEPAYVWLWLG

Host

Mouse

Reactivity

Human

Interspecies Antigen Sequence	Mouse (76); Rat (76)
Isotype	IgG2a Kappa
Quality Control Testing	Antibody Reactive Against Recombinant Protein.
Storage Buffer	In 1x PBS, pH 7.4
Storage Instruction	Store at -20°C or lower. Aliquot to avoid repeated freezing and thawing.

Applications

- Sandwich ELISA (Recombinant protein)

Detection limit for recombinant GST tagged SLC27A2 is 1 ng/ml as a capture antibody.

[Protocol Download](#)

- ELISA

- Immunofluorescence

Immunofluorescence of monoclonal antibody to SLC27A2 on HeLa cell . [antibody concentration 10 ug/ml]

Gene Info — SLC27A2

Entrez GeneID	11001
GeneBank Accession#	NM_003645
Protein Accession#	NP_003636
Gene Name	SLC27A2
Gene Alias	ACSVL1, FACVL1, FATP2, HsT17226, VLACS, VLCS, hFACVL1
Gene Description	solute carrier family 27 (fatty acid transporter), member 2
Omim ID	603247
Gene Ontology	Hyperlink

Gene Summary

The protein encoded by this gene is an isozyme of long-chain fatty-acid-coenzyme A ligase family . Although differing in substrate specificity, subcellular localization, and tissue distribution, all isozymes of this family convert free long-chain fatty acids into fatty acyl-CoA esters, and thereby play a key role in lipid biosynthesis and fatty acid degradation. This isozyme activates long-chain, branched-chain and very-long-chain fatty acids containing 22 or more carbons to their CoA derivatives. It is expressed primarily in liver and kidney, and is present in both endoplasmic reticulum and peroxisomes, but not in mitochondria. Its decreased peroxisomal enzyme activity is in part responsible for the biochemical pathology in X-linked adrenoleukodystrophy. Alternatively spliced transcript variants encoding different isoforms have been found for this gene. [provided by RefSeq

Other Designations

very long-chain fatty-acid-coenzyme A ligase 1|very-long-chain acyl-CoA synthetase

Pathway

- [PPAR signaling pathway](#)

Disease

- [Alzheimer Disease](#)