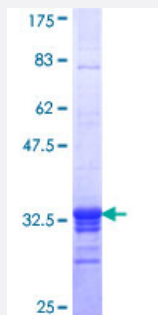


SF3B2 (Human) Recombinant Protein (Q01)

Catalog # H00010992-Q01

Size 25 ug, 10 ug

Applications



Specification

| | |
|--------------------------------------|---|
| Product Description | Human SF3B2 partial ORF (NP_006833, 592 a.a. - 645 a.a.) recombinant protein with GST-tag at N-terminal. |
| Sequence | YEGKEFETRLKEKKPGDLSDELRLSLGMPVGPNAHKVPPPWLIAMQRYGPPPSY |
| Host | Wheat Germ (in vitro) |
| Theoretical MW (kDa) | 31.68 |
| Interspecies Antigen Sequence | Mouse (98); Rat (98) |
| Preparation Method | in vitro wheat germ expression system |
| Purification | Glutathione Sepharose 4 Fast Flow |
| Quality Control Testing | 12.5% SDS-PAGE Stained with Coomassie Blue. |
| Storage Buffer | 50 mM Tris-HCl, 10 mM reduced Glutathione, pH=8.0 in the elution buffer. |
| Storage Instruction | Store at -80°C. Aliquot to avoid repeated freezing and thawing. |
| Note | Best use within three months from the date of receipt of this protein. |

Applications

- Enzyme-linked Immunoabsorbent Assay
- Western Blot (Recombinant protein)
- Antibody Production
- Protein Array

Gene Info — SF3B2

Entrez GeneID [10992](#)

GeneBank Accession# [NM_006842](#)

Protein Accession# [NP_006833](#)

Gene Name SF3B2

Gene Alias SAP145, SF3B145, SF3b1, SF3b150

Gene Description splicing factor 3b, subunit 2, 145kDa

Omim ID [605591](#)

Gene Ontology [Hyperlink](#)

Gene Summary This gene encodes subunit 2 of the splicing factor 3b protein complex. Splicing factor 3b, together with splicing factor 3a and a 12S RNA unit, forms the U2 small nuclear ribonucleoproteins complex (U2 snRNP). The splicing factor 3b/3a complex binds pre-mRNA upstream of the intron's branch site in a sequence-independent manner and may anchor the U2 snRNP to the pre-mRNA. Splicing factor 3b is also a component of the minor U12-type spliceosome. Subunit 2 associates with pre-mRNA upstream of the branch site at the anchoring site. Subunit 2 also interacts directly with subunit 4 of the splicing factor 3b complex. Subunit 2 is a highly hydrophilic protein with a proline-rich N-terminus and a glutamate-rich stretch in the C-terminus. [provided by RefSeq]

Other Designations pre-mRNA splicing factor SF3b 145 kDa subunit|spliceosome associated protein 145|splicing factor 3B subunit 2