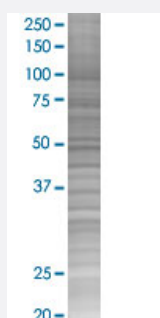


METAP2 293T Cell Transient Overexpression Lysate(Denatured)

Catalog # H00010988-T02

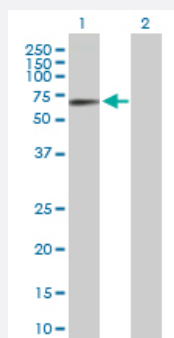
Size 100 uL

Applications



SDS-PAGE Gel

METAP2 transfected lysate.



Western Blot

Lane 1: METAP2 transfected lysate (52.90 KDa)

Lane 2: Non-transfected lysate.

Specification

Transfected Cell Line	293T
Plasmid	pCMV-METAP2 full-length
Host	Human
Theoretical MW (kDa)	52.9
Interspecies Antigen Sequence	Mouse (94); Rat (93)

Quality Control Testing

Transient overexpression cell lysate was tested with Anti-METAP2 antibody ([H00010988-B01P](#)) by Western Blots.
SDS-PAGE Gel
METAP2 transfected lysate.
Western Blot
Lane 1: METAP2 transfected lysate (52.90 KDa)
Lane 2: Non-transfected lysate.

Storage Buffer

1X Sample Buffer (50 mM Tris-HCl, 2% SDS, 10% glycerol, 300 mM 2-mercaptoethanol, 0.01% Bromophenol blue)

Storage Instruction

Store at -80°C. Aliquot to avoid repeated freezing and thawing.

Applications

- Western Blot

Gene Info — METAP2

Entrez GeneID [10988](#)

GeneBank Accession# [NM_006838](#)

Protein Accession# [NP_006829.1](#)

Gene Name METAP2

Gene Alias MAP2, MNPEP, p67, p67eIF2

Gene Description methionyl aminopeptidase 2

Omim ID [601870](#)

Gene Ontology [Hyperlink](#)

Gene Summary

This gene is a member of the methionyl aminopeptidase family and encodes a protein that binds 2 cobalt or manganese ions. This protein functions both by protecting the alpha subunit of eukaryotic initiation factor 2 from inhibitory phosphorylation and by removing the amino-terminal methionine residue from nascent protein. Increased expression of this gene is associated with various forms of cancer and the anti-cancer drugs fumagillin and ovalicin inhibit the protein by irreversibly binding to its active site. A pseudogene of this gene is located on chromosome 2. [provided by RefSeq]

Other Designations

eIF-2-associated p67 homolog|initiation factor 2-associated 67 kDa glycoprotein|peptidase M 2

Disease

- [Genetic Predisposition to Disease](#)
- [Lung Neoplasms](#)