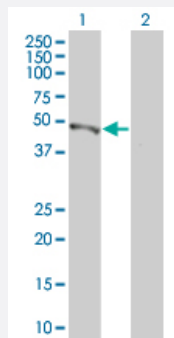


# MAPRE2 293T Cell Transient Overexpression Lysate(Denatured)

Catalog # H00010982-T01

Size 100 uL

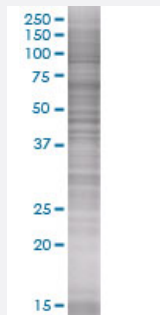
## Applications



### Western Blot

Lane 1: MAPRE2 transfected lysate ( 35.97 KDa)

Lane 2: Non-transfected lysate.



### SDS-PAGE Gel

MAPRE2 transfected lysate.

## Specification

Transfected Cell Line	293T
Plasmid	pCMV-MAPRE2 full-length
Host	Human
Theoretical MW (kDa)	36.08
Quality Control Testing	<p>Transient overexpression cell lysate was tested with Anti-MAPRE2 antibody (<a href="#">H00010982-B01</a>) by Western Blots.</p> <p>Western Blot</p> <p>Lane 1: MAPRE2 transfected lysate ( 35.97 KDa)</p> <p>Lane 2: Non-transfected lysate.</p> <p>SDS-PAGE Gel</p> <p>MAPRE2 transfected lysate.</p>

Storage Buffer	1X Sample Buffer (50 mM Tris-HCl, 2% SDS, 10% glycerol, 300 mM 2-mercaptoethanol, 0.01% Bromophenol blue)
Storage Instruction	Store at -80°C. Aliquot to avoid repeated freezing and thawing.

## Applications

- Western Blot

## Gene Info — MAPRE2

Entrez GeneID	<a href="#">10982</a>
GeneBank Accession#	<a href="#">NM_014268</a>
Protein Accession#	<a href="#">NP_055083</a>
Gene Name	MAPRE2
Gene Alias	EB1, EB2, RP1
Gene Description	microtubule-associated protein, RP/EB family, member 2
Omim ID	<a href="#">605789</a>
Gene Ontology	<a href="#">Hyperlink</a>
Gene Summary	The protein encoded by this gene shares significant homology to the adenomatous polyposis coli (APC) protein-binding EB1 gene family. The function of this protein is unknown; however, its homology suggests involvement in tumorigenesis of colorectal cancers and proliferative control of normal cells. This gene may belong to the intermediate/early gene family, involved in the signal transduction cascade downstream of the TCR. Alternative splicing results in multiple transcript variants. [provided by RefSeq]
Other Designations	APC-binding protein EB1 T-cell activation protein, EB1 family

## Disease

- [Tobacco Use Disorder](#)