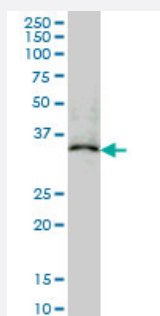


# MAPRE2 monoclonal antibody (M03), clone 4D7

Catalog # H00010982-M03

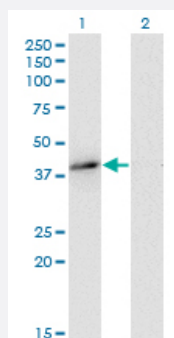
Size 100 ug

## Applications



### Western Blot (Cell lysate)

MAPRE2 monoclonal antibody (M03), clone 4D7 Western Blot analysis of MAPRE2 expression in K-562 ( Cat # L009V1 ).

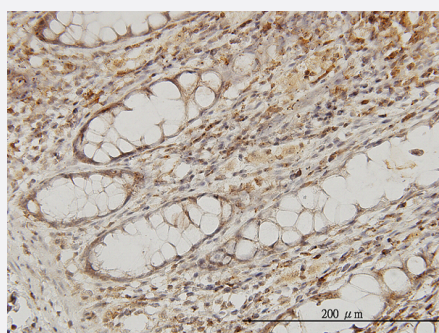


### Western Blot (Transfected lysate)

Western Blot analysis of MAPRE2 expression in transfected 293T cell line by MAPRE2 monoclonal antibody (M03), clone 4D7.

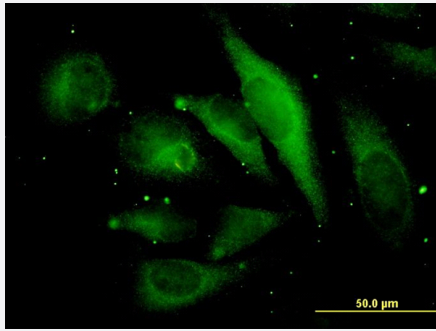
Lane 1: MAPRE2 transfected lysate (Predicted MW: 37 KDa).

Lane 2: Non-transfected lysate.



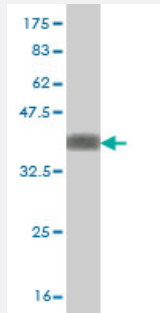
### Immunohistochemistry (Formalin/PFA-fixed paraffin-embedded sections)

Immunoperoxidase of monoclonal antibody to MAPRE2 on formalin-fixed paraffin-embedded human colon. [antibody concentration 3 ug/ml]



## Immunofluorescence

Immunofluorescence of monoclonal antibody to MAPRE2 on HeLa cell.  
[antibody concentration 35 ug/ml]



Western Blot detection against Immunogen (32.93 KDa) .

## Specification

<b>Product Description</b>	Mouse monoclonal antibody raised against a partial recombinant MAPRE2.
<b>Immunogen</b>	MAPRE2 (NP_055083, 1 a.a. ~ 62 a.a) partial recombinant protein with GST tag. MW of the GST tag alone is 26 KDa.
<b>Sequence</b>	MPGPTQTLSPNGENNNNDIQDNNGTIIPFRKHTVRGERSYSWGMAVNVYSTSITQETMSRHD
<b>Host</b>	Mouse
<b>Reactivity</b>	Human
<b>Isotype</b>	IgG1 Kappa
<b>Quality Control Testing</b>	Antibody Reactive Against Recombinant Protein. Western Blot detection against Immunogen (32.93 KDa) .
<b>Storage Buffer</b>	In 1x PBS, pH 7.4
<b>Storage Instruction</b>	Store at -20°C or lower. Aliquot to avoid repeated freezing and thawing.

## Applications

- Western Blot (Cell lysate)

MAPRE2 monoclonal antibody (M03), clone 4D7 Western Blot analysis of MAPRE2 expression in K-562 ( Cat # L009V1 ).

[Protocol Download](#)

- Western Blot (Transfected lysate)

Western Blot analysis of MAPRE2 expression in transfected 293T cell line by MAPRE2 monoclonal antibody (M03), clone 4D7.

Lane 1: MAPRE2 transfected lysate (Predicted MW: 37 KDa).

Lane 2: Non-transfected lysate.

[Protocol Download](#)

- Western Blot (Recombinant protein)

[Protocol Download](#)

- Immunohistochemistry (Formalin/PFA-fixed paraffin-embedded sections)

Immunoperoxidase of monoclonal antibody to MAPRE2 on formalin-fixed paraffin-embedded human colon. [antibody concentration 3 ug/ml]

[Protocol Download](#)

- ELISA

- Immunofluorescence

Immunofluorescence of monoclonal antibody to MAPRE2 on HeLa cell. [antibody concentration 35 ug/ml]

## Gene Info — MAPRE2

Entrez GeneID [10982](#)

GeneBank Accession# [NM\\_014268](#)

Protein Accession# [NP\\_055083](#)

Gene Name MAPRE2

Gene Alias EB1, EB2, RP1

Gene Description microtubule-associated protein, RP/EB family, member 2

Omim ID [605789](#)

Gene Ontology [Hyperlink](#)

**Gene Summary**

The protein encoded by this gene shares significant homology to the adenomatous polyposis coli (APC) protein-binding EB1 gene family. The function of this protein is unknown; however, its homology suggests involvement in tumorigenesis of colorectal cancers and proliferative control of normal cells. This gene may belong to the intermediate/early gene family, involved in the signal transduction cascade downstream of the TCR. Alternative splicing results in multiple transcript variants. [provided by RefSeq]

**Other Designations**

APC-binding protein EB1|T-cell activation protein, EB1 family

**Disease**

- [Tobacco Use Disorder](#)