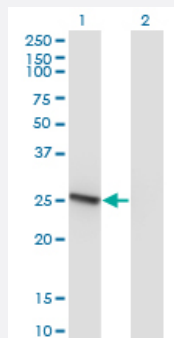


RAB32 monoclonal antibody (M01), clone 1C7

Catalog # H00010981-M01

Size 100 ug

Applications

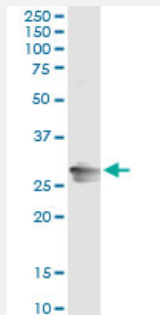


Western Blot (Transfected lysate)

Western Blot analysis of RAB32 expression in transfected 293T cell line by RAB32 monoclonal antibody (M01), clone 1C7.

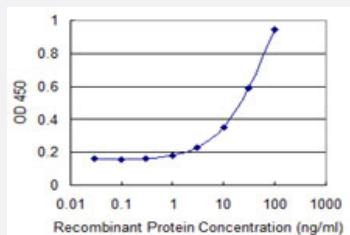
Lane 1: RAB32 transfected lysate (25 kDa).

Lane 2: Non-transfected lysate.



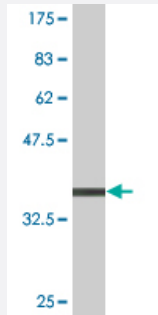
Immunoprecipitation

Immunoprecipitation of RAB32 transfected lysate using anti-RAB32 monoclonal antibody and Protein A Magnetic Bead, and immunoblotted with RAB32 MaxPab rabbit polyclonal antibody.



Sandwich ELISA (Recombinant protein)

Detection limit for recombinant GST tagged RAB32 is 0.3 ng/ml as a capture antibody.



Western Blot detection against Immunogen (35.64 KDa) .

Specification

Product Description	Mouse monoclonal antibody raised against a partial recombinant RAB32.
Immunogen	RAB32 (NP_006825, 136 a.a. ~ 225 a.a) partial recombinant protein with GST tag. MW of the GST tag alone is 26 KDa.
Sequence	IPAVLLANKCDQNKDSSQSPSQVDQFCKEHGFAGWFETSAKDNINIEEAARFLVEKILVNHQSFP NEENDVDKIKLDQETLRAENKSQCC
Host	Mouse
Reactivity	Human
Interspecies Antigen Sequence	Mouse (84); Rat (83)
Isotype	IgG2a Kappa
Quality Control Testing	Antibody Reactive Against Recombinant Protein. Western Blot detection against Immunogen (35.64 KDa) .
Storage Buffer	In 1x PBS, pH 7.4
Storage Instruction	Store at -20°C or lower. Aliquot to avoid repeated freezing and thawing.

Applications

● Western Blot (Transfected lysate)

Western Blot analysis of RAB32 expression in transfected 293T cell line by RAB32 monoclonal antibody (M01), clone 1C7.

Lane 1: RAB32 transfected lysate(25 KDa).

Lane 2: Non-transfected lysate.

[Protocol Download](#)

- Western Blot (Recombinant protein)

[Protocol Download](#)

- Immunoprecipitation

Immunoprecipitation of RAB32 transfected lysate using anti-RAB32 monoclonal antibody and Protein A Magnetic Bead, and immunoblotted with RAB32 MaxPab rabbit polyclonal antibody.

[Protocol Download](#)

- Sandwich ELISA (Recombinant protein)

Detection limit for recombinant GST tagged RAB32 is 0.3 ng/ml as a capture antibody.

[Protocol Download](#)

- ELISA

Gene Info — RAB32

Entrez GeneID	10981
---------------	-----------------------

GeneBank Accession#	NM_006834
---------------------	---------------------------

Protein Accession#	NP_006825
--------------------	---------------------------

Gene Name	RAB32
-----------	-------

Gene Alias	-
------------	---

Gene Description	RAB32, member RAS oncogene family
------------------	-----------------------------------

Gene Ontology	Hyperlink
---------------	---------------------------

Gene Summary	Small GTP-binding proteins of the RAB family, such as RAB32, play essential roles in vesicle and granule targeting (Bao et al., 2002 [PubMed 11784320]).[supplied by OMIM]
--------------	--

Other Designations	OTTHUMP00000017369
--------------------	--------------------