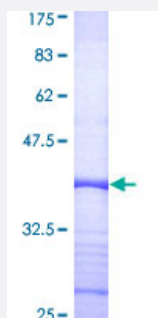


# COPS6 (Human) Recombinant Protein (Q01)

Catalog # H00010980-Q01

Size 25 ug, 10 ug

## Applications



## Specification

<b>Product Description</b>	Human COPS6 partial ORF ( AAH02520, 218 a.a. - 327 a.a.) recombinant protein with GST-tag at N-terminal.
<b>Sequence</b>	AEHLIAQHSAIKMLHSRVKLILEYVKASEAGEVPFNHEILREAYALCHCLPVLSTDKFKTDFYDQCN DVGLMAYLGTITKTCNTMNQFVNKFNVLYDRQGIGRRMRGLFF
<b>Host</b>	Wheat Germ (in vitro)
<b>Theoretical MW (kDa)</b>	37.95
<b>Interspecies Antigen Sequence</b>	Mouse (98); Rat (98)
<b>Preparation Method</b>	<a href="#">in vitro wheat germ expression system</a>
<b>Purification</b>	Glutathione Sepharose 4 Fast Flow
<b>Quality Control Testing</b>	12.5% SDS-PAGE Stained with Coomassie Blue.
<b>Storage Buffer</b>	50 mM Tris-HCl, 10 mM reduced Glutathione, pH=8.0 in the elution buffer.
<b>Storage Instruction</b>	Store at -80°C. Aliquot to avoid repeated freezing and thawing.
<b>Note</b>	Best use within three months from the date of receipt of this protein.

## Applications

- Enzyme-linked Immunoabsorbent Assay
- Western Blot (Recombinant protein)
- Antibody Production
- Protein Array

## Gene Info — COPS6

Entrez GeneID [10980](#)

GeneBank Accession# [BC002520](#)

Protein Accession# [AAH02520](#)

Gene Name COPS6

Gene Alias CSN6, MOV34-34KD

Gene Description COP9 constitutive photomorphogenic homolog subunit 6 (Arabidopsis)

Gene Ontology [Hyperlink](#)

**Gene Summary** The protein encoded by this gene is one of the eight subunits of COP9 signalosome, a highly conserved protein complex that functions as an important regulator in multiple signaling pathways. The structure and function of COP9 signalosome is similar to that of the 19S regulatory particle of 26S proteasome. COP9 signalosome has been shown to interact with SCF-type E3 ubiquitin ligases and act as a positive regulator of E3 ubiquitin ligases. This protein belongs to translation initiation factor 3 (eIF3) superfamily. It is involved in the regulation of cell cycle and likely to be a cellular cofactor for HIV-1 accessory gene product Vpr. [provided by RefSeq]

**Other Designations** COP9 signalosome subunit 6|COP9 subunit 6 (MOV34 homolog, 34 kD)|H\_NH0506M12.12|MOV34 homolog, 34 kD