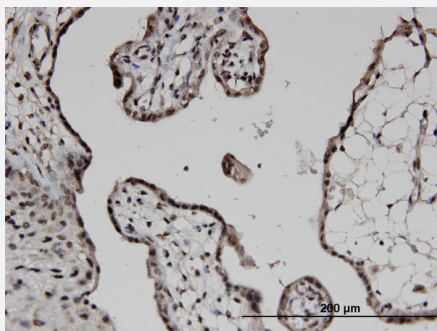


COPS6 monoclonal antibody (M08), clone 2H5

Catalog # H00010980-M08

Size 100 ug

Applications



Immunohistochemistry (Formalin/PFA-fixed paraffin-embedded sections)

Immunoperoxidase of monoclonal antibody to COPS6 on formalin-fixed paraffin-embedded human placenta. [antibody concentration 1.5 ug/ml]

Specification

Product Description	Mouse monoclonal antibody raised against a partial recombinant COPS6.
Immunogen	COPS6 (AAH02520, 30 a.a. ~ 327 a.a) partial recombinant protein with GST tag. MW of the GST tag alone is 26 KDa.
Sequence	VMACGVTGVSVALHPLVLNISDHWIRMRSQEGRPVQVIGALIGKQEGRNIEVMNSFELLSHTVE EKIIIDKEYYYTKEEQFKQVFKELEFLGWYTTGGPPDPSDIHVHKQVCEIIESPLFLKLNPMTKHTDL PVSVFESVIDIINGEATMLFAELTYTLATEEAERIGVDHVARMATATGSGENSTVAEHLIAQHSIAKML HSRVKLILEYVKASEAGEVPFNHEILREAYALCHCLPVLSTDKFKTDFYDQCN
Host	Mouse
Reactivity	Human
Interspecies Antigen Sequence	Mouse (98); Rat (98)
Isotype	IgG2a Kappa
Quality Control Testing	Antibody Reactive Against Recombinant Protein.
Storage Buffer	In 1x PBS, pH 7.4

Storage Instruction

Store at -20°C or lower. Aliquot to avoid repeated freezing and thawing.

Applications

- Immunohistochemistry (Formalin/PFA-fixed paraffin-embedded sections)

Immunoperoxidase of monoclonal antibody to COPS6 on formalin-fixed paraffin-embedded human placenta. [antibody concentration 1.5 ug/ml]

[Protocol Download](#)

- ELISA

Gene Info — COPS6

Entrez GeneID [10980](#)

GeneBank Accession# [BC002520](#)

Protein Accession# [AAH02520](#)

Gene Name COPS6

Gene Alias CSN6, MOV34-34KD

Gene Description COP9 constitutive photomorphogenic homolog subunit 6 (Arabidopsis)

Gene Ontology [Hyperlink](#)

Gene Summary The protein encoded by this gene is one of the eight subunits of COP9 signalosome, a highly conserved protein complex that functions as an important regulator in multiple signaling pathways. The structure and function of COP9 signalosome is similar to that of the 19S regulatory particle of 26 S proteasome. COP9 signalosome has been shown to interact with SCF-type E3 ubiquitin ligases and act as a positive regulator of E3 ubiquitin ligases. This protein belongs to translation initiation factor 3 (eIF3) superfamily. It is involved in the regulation of cell cycle and likely to be a cellular cofactor for HIV-1 accessory gene product Vpr. [provided by RefSeq]

Other Designations COP9 signalosome subunit 6|COP9 subunit 6 (MOV34 homolog, 34 kD)|H_NH0506M12.12|MOV34 homolog, 34 kD