

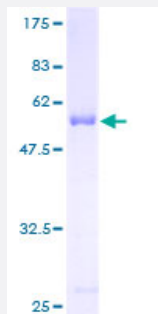
Full-Length

YWHAQ (Human) Recombinant Protein (P01)

Catalog # H00010971-P01

Size 25 ug, 10 ug

Applications



Specification

Product Description

Human YWHAQ full-length ORF (AAH56867, 1 a.a. - 245 a.a.) recombinant protein with GST-tag at N-terminal.

Sequence

MEKTELIQKAKLAEQAERYDDMATCMKAVTEQGAELSNEERNLLSVAYKNVVGGRSAWRVISSI
EQKTDTSDDKKLQLIKDYREKVESELRSICTTVLELLDKYLIANATNPESKVFYLMKGDYFRYLAEV
ACGDDRKQTIDNSQGAYQEAFFDISKKEMQPTHPIRLGLALNFSVFYIEILNNPELACTLAKTAFDEA
IAELDTLNEDSYKDSTLIMQLLRDNLTLWTSDSAGEECDAEAGAEN

Host

Wheat Germ (in vitro)

Theoretical MW (kDa)

52.69

Interspecies Antigen Sequence

Rat (99)

Preparation Method

[in vitro wheat germ expression system](#)

Purification

Glutathione Sepharose 4 Fast Flow

Quality Control Testing

12.5% SDS-PAGE Stained with Coomassie Blue.

Storage Buffer

50 mM Tris-HCl, 10 mM reduced Glutathione, pH=8.0 in the elution buffer.

Storage Instruction

Store at -80°C. Aliquot to avoid repeated freezing and thawing.

Note

Best use within three months from the date of receipt of this protein.

Applications

- Enzyme-linked Immunoabsorbent Assay
- Western Blot (Recombinant protein)
- Antibody Production
- Protein Array

Gene Info — YWHAQ

| | |
|---------------------|---|
| Entrez GeneID | 10971 |
| GeneBank Accession# | BC056867 |
| Protein Accession# | AAH56867 |
| Gene Name | YWHAQ |
| Gene Alias | 14-3-3, 1C5, HS1 |
| Gene Description | tyrosine 3-monooxygenase/tryptophan 5-monooxygenase activation protein, theta polypeptide |
| Omim ID | 609009 |
| Gene Ontology | Hyperlink |
| Gene Summary | This gene product belongs to the 14-3-3 family of proteins which mediate signal transduction by binding to phosphoserine-containing proteins. This highly conserved protein family is found in both plants and mammals, and this protein is 99% identical to the mouse and rat orthologs. This gene is upregulated in patients with amyotrophic lateral sclerosis. It contains in its 5' UTR a 6 bp tandem repeat sequence which is polymorphic, however, there is no correlation between the repeat number and the disease. [provided by RefSeq] |
| Other Designations | 14-3-3 protein T-cell 14-3-3 protein tau 14-3-3 protein theta OTTHUMP00000015730 protein tau tyrosine 3/tryptophan 5 -monooxygenase activation protein, theta polypeptide |

Pathway

- [Cell cycle](#)
- [Neurotrophin signaling pathway](#)
- [Pathogenic Escherichia coli infection - EHEC](#)

Disease

- [Breast cancer](#)
- [Breast Neoplasms](#)
- [Genetic Predisposition to Disease](#)