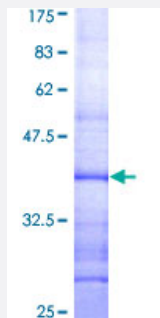


RAB40B (Human) Recombinant Protein (Q01)

Catalog # H00010966-Q01

Size 25 ug, 10 ug

Applications



Specification

Product Description	Human RAB40B partial ORF (AAH18039, 179 a.a. - 278 a.a.) recombinant protein with GST-tag at N-terminal.
Sequence	GMDRLWRPSKVLSLQDLCCRAVVSTCPVHLVDKLPLPIALRSHLKSFSMANGLNARMMHGGSY SLTTSSTHKRSSLRKVKLVRPPQSPPKNCNTRNSCKIS
Host	Wheat Germ (in vitro)
Theoretical MW (kDa)	36.63
Interspecies Antigen Sequence	Mouse (92); Rat (94)
Preparation Method	in vitro wheat germ expression system
Purification	Glutathione Sepharose 4 Fast Flow
Quality Control Testing	12.5% SDS-PAGE Stained with Coomassie Blue.
Storage Buffer	50 mM Tris-HCl, 10 mM reduced Glutathione, pH=8.0 in the elution buffer.
Storage Instruction	Store at -80°C. Aliquot to avoid repeated freezing and thawing.
Note	Best use within three months from the date of receipt of this protein.

Applications

- Enzyme-linked Immunoabsorbent Assay
- Western Blot (Recombinant protein)
- Antibody Production
- Protein Array

Gene Info — RAB40B

Entrez GeneID	10966
GeneBank Accession#	BC018039
Protein Accession#	AAH18039
Gene Name	RAB40B
Gene Alias	FLJ42385, RAR, SEC4L
Gene Description	RAB40B, member RAS oncogene family
Gene Ontology	Hyperlink
Gene Summary	The protein encoded by this gene has similarity to a yeast protein which suggests a role of the gene product in regulating secretory vesicles. [provided by RefSeq]
Other Designations	GTP-binding protein homologous to Saccharomyces cerevisiae SEC4