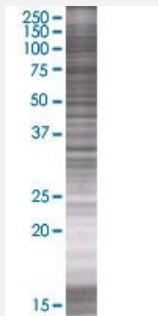


TOMM34 293T Cell Transient Overexpression Lysate(Denatured)

Catalog # H00010953-T01

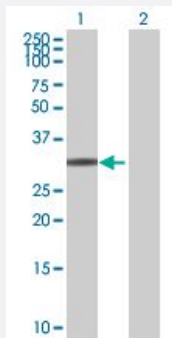
Size 100 uL

Applications



SDS-PAGE Gel

TOMM34 transfected lysate.



Western Blot

Lane 1: TOMM34 transfected lysate (34.1 KDa)

Lane 2: Non-transfected lysate.

Specification

Transfected Cell Line	293T
Plasmid	pCMV-TOMM34 full-length
Host	Human
Theoretical MW (kDa)	34.1
Interspecies Antigen Sequence	Mouse (88); Rat (88)

Quality Control Testing

Transient overexpression cell lysate was tested with Anti-TOMM34 antibody ([H00010953-B01](#)) by Western Blots.
SDS-PAGE Gel
TOMM34 transfected lysate.
Western Blot
Lane 1: TOMM34 transfected lysate (34.1 KDa)
Lane 2: Non-transfected lysate.

Storage Buffer

1X Sample Buffer (50 mM Tris-HCl, 2% SDS, 10% glycerol, 300 mM 2-mercaptoethanol, 0.01% Bromophenol blue)

Storage Instruction

Store at -80°C. Aliquot to avoid repeated freezing and thawing.

Applications

- Western Blot

Gene Info — TOMM34

Entrez GeneID[10953](#)**GeneBank Accession#**[NM_006809.4](#)**Protein Accession#**[NP_006800.2](#)**Gene Name**

TOMM34

Gene Alias

HTOM34P, TOM34, URCC3

Gene Description

translocase of outer mitochondrial membrane 34

Gene Ontology[Hyperlink](#)**Gene Summary**

The protein encoded by this gene is involved in the import of precursor proteins into mitochondria. The encoded protein has a chaperone-like activity, binding the mature portion of unfolded proteins and aiding their import into mitochondria. This protein, which is found in the cytoplasm and sometimes associated with the outer mitochondrial membrane, has a weak ATPase activity and contains 6 TPR repeats. [provided by RefSeq]

Other Designations

OTTHUMP00000031079|mitochondrial import receptor subunit TOM34|outer mitochondrial membrane translocase (34kD)