

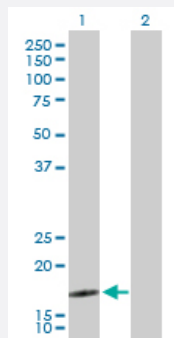
MaxPab®

SEC61B purified MaxPab rabbit polyclonal antibody (D01P)

Catalog # H00010952-D01P

Size 100 ug

Applications



Western Blot (Transfected lysate)

Western Blot analysis of SEC61B expression in transfected 293T cell line ([H00010952-T02](#)) by SEC61B MaxPab polyclonal antibody.

Lane 1: SEC61B transfected lysate(10.00 KDa).

Lane 2: Non-transfected lysate.

Specification

Product Description	Rabbit polyclonal antibody raised against a full-length human SEC61B protein.
Immunogen	SEC61B (NP_006799.1, 1 a.a. ~ 96 a.a) full-length human protein.
Sequence	MPGPTPSGTNVGSSGRSPSKAVAARAAGSTVRQRKNASCGTRSAGRRTTSAGTGGMWRFYTED SPGLKVGPVPVLVMSLLFIASVFMLHWGKYTRS
Host	Rabbit
Reactivity	Human
Interspecies Antigen Sequence	Mouse (98); Rat (98)
Quality Control Testing	Antibody reactive against mammalian transfected lysate.
Storage Buffer	In 1x PBS, pH 7.4
Storage Instruction	Store at -20°C or lower. Aliquot to avoid repeated freezing and thawing.

Applications

- Western Blot (Transfected lysate)

Western Blot analysis of SEC61B expression in transfected 293T cell line ([H00010952-T02](#)) by SEC61B MaxPab polyclonal antibody.

Lane 1: SEC61B transfected lysate(10.00 KDa).

Lane 2: Non-transfected lysate.

[Protocol Download](#)

Gene Info — SEC61B

Entrez GeneID [10952](#)

GeneBank Accession# [NM_006808.2](#)

Protein Accession# [NP_006799.1](#)

Gene Name SEC61B

Gene Alias -

Gene Description Sec61 beta subunit

Omim ID [609214](#)

Gene Ontology [Hyperlink](#)

Gene Summary The Sec61 complex is the central component of the protein translocation apparatus of the endoplasmic reticulum (ER) membrane. Oligomers of the Sec61 complex form a transmembrane channel where proteins are translocated across and integrated into the ER membrane. This complex consists of three membrane proteins- alpha, beta, and gamma. This gene encodes the beta-subunit protein. The Sec61 subunits are also observed in the post-ER compartment, suggesting that these proteins can escape the ER and recycle back. There is evidence for multiple polyadenylated sites for this transcript. [provided by RefSeq]

Other Designations OTTHUMP00000021784|Sec61 complex, beta subunit|protein translocation complex beta|protein transport protein SEC61 beta subunit

Pathway

- [Vibrio cholerae infection](#)