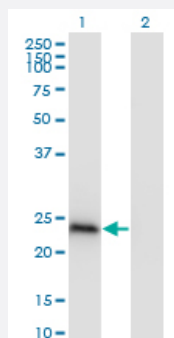


CBX1 monoclonal antibody (M01), clone 4E12

Catalog # H00010951-M01

Size 100 ug

Applications

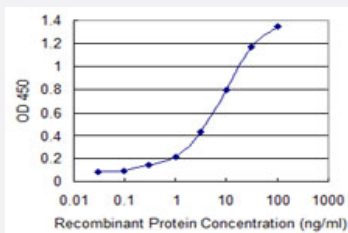


Western Blot (Transfected lysate)

Western Blot analysis of CBX1 expression in transfected 293T cell line by CBX1 monoclonal antibody (M01), clone 4E12.

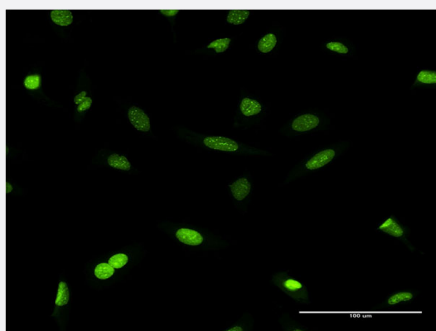
Lane 1: CBX1 transfected lysate (21.4 kDa).

Lane 2: Non-transfected lysate.



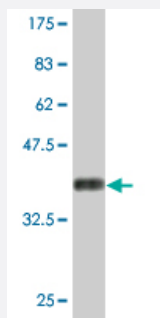
Sandwich ELISA (Recombinant protein)

Detection limit for recombinant GST tagged CBX1 is 0.1 ng/ml as a capture antibody.



Immunofluorescence

Immunofluorescence of monoclonal antibody to CBX1 on HeLa cell . [antibody concentration 10 ug/ml]



Western Blot detection against Immunogen (36.52 KDa) .

Specification

Product Description	Mouse monoclonal antibody raised against a partial recombinant CBX1.
Immunogen	CBX1 (NP_006798.1, 2 a.a. ~ 99 a.a) partial recombinant protein with GST tag. MW of the GST tag alone is 26 KDa.
Sequence	GKKQNKKKVVEEVLEEEEEYYVEKVLDRRVVKGKVEYLLKWKGFSDEDNTWEPEENLDCPDLI AEFLQSQKTAHETDKSEGGRKADSDSEDKGEEK
Host	Mouse
Reactivity	Human
Interspecies Antigen Sequence	Mouse (100); Rat (99)
Isotype	IgG2a Kappa
Quality Control Testing	Antibody Reactive Against Recombinant Protein. Western Blot detection against Immunogen (36.52 KDa) .
Storage Buffer	In 1x PBS, pH 7.4
Storage Instruction	Store at -20°C or lower. Aliquot to avoid repeated freezing and thawing.

Applications

● Western Blot (Transfected lysate)

Western Blot analysis of CBX1 expression in transfected 293T cell line by CBX1 monoclonal antibody (M01), clone 4E12.

Lane 1: CBX1 transfected lysate(21.4 KDa).

Lane 2: Non-transfected lysate.

[Protocol Download](#)

- Western Blot (Recombinant protein)

[Protocol Download](#)

- Sandwich ELISA (Recombinant protein)

Detection limit for recombinant GST tagged CBX1 is 0.1 ng/ml as a capture antibody.

[Protocol Download](#)

- ELISA

- Immunofluorescence

Immunofluorescence of monoclonal antibody to CBX1 on HeLa cell . [antibody concentration 10 ug/ml]

Gene Info — CBX1

Entrez GeneID [10951](#)

GeneBank Accession# [NM_006807](#)

Protein Accession# [NP_006798.1](#)

Gene Name CBX1

Gene Alias CBX, HP1-BETA, HP1Hs-beta, HP1Hsbeta, M31, MOD1, p25beta

Gene Description chromobox homolog 1 (HP1 beta homolog Drosophila)

Omim ID [604511](#)

Gene Ontology [Hyperlink](#)

Gene Summary This gene encodes a highly conserved nonhistone protein, which is a member of the heterochromatin protein family . The protein is enriched in the heterochromatin and associated with centromeres. The protein has a single N-terminal chromodomain which can bind to histone proteins via methylated lysine residues, and a C-terminal chromo shadow-domain (CSD) which is responsible for the homodimerization and interaction with a number of chromatin-associated nonhistone proteins. The protein may play an important role in the epigenetic control of chromatin structure and gene expression. Several related pseudogenes are located on chromosomes 1, 3, and X. Multiple alternatively spliced variants, encoding the same protein, have been identified. [provided by RefSeq]

Other Designations heterochromatin protein 1-beta|heterochromatin protein p25 beta|modifier 1 protein