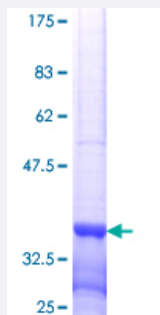


MSL3L1 (Human) Recombinant Protein (Q01)

Catalog # H00010943-Q01

Size 25 ug, 10 ug

Applications



Specification

Product Description	Human MSL3L1 partial ORF (NP_523353.1, 1 a.a. - 79 a.a.) recombinant protein with GST-tag at N-terminal.
Sequence	MSASEGMKFKFHSGEKVLCFEPDPTKARVLYDAKIVVVV/GKDEKGRKIP EYLHFNGWNRSWDR WAAEDHVL RDTDEN
Host	Wheat Germ (in vitro)
Theoretical MW (kDa)	34.43
Interspecies Antigen Sequence	Mouse (86); Rat (87)
Preparation Method	in vitro wheat germ expression system
Purification	Glutathione Sepharose 4 Fast Flow
Quality Control Testing	12.5% SDS-PAGE Stained with Coomassie Blue.
Storage Buffer	50 mM Tris-HCl, 10 mM reduced Glutathione, pH=8.0 in the elution buffer.
Storage Instruction	Store at -80°C. Aliquot to avoid repeated freezing and thawing.
Note	Best use within three months from the date of receipt of this protein.

Applications

- Enzyme-linked Immunoabsorbent Assay
- Western Blot (Recombinant protein)
- Antibody Production
- Protein Array

Gene Info — MSL3

Entrez GeneID [10943](#)

GeneBank Accession# [NM_078629](#)

Protein Accession# [NP_523353.1](#)

Gene Name MSL3

Gene Alias DKFZp586J1822, MSL3L1

Gene Description male-specific lethal 3 homolog (Drosophila)

Omim ID [300609](#)

Gene Ontology [Hyperlink](#)

Gene Summary This gene encodes a nuclear protein and has similarity to drosophila male-specific lethal-3 gene. The drosophila protein plays a critical role in a dosage-compensation pathway, which equalizes X-linked gene expression in males and females. Thus this encoded protein is thought to play a similar function in chromatin remodeling and transcriptional regulation. This gene has been found to undergo X inactivation. There are four alternatively spliced transcript variants of this gene encoding different isoforms. [provided by RefSeq]

Other Designations OTTHUMP00000022911|OTTHUMP00000022912|drosophila MSL3-like 1|male-specific lethal 3-like 1