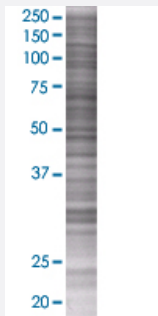


# PRSS21 293T Cell Transient Overexpression Lysate(Denatured)

Catalog # H00010942-T01

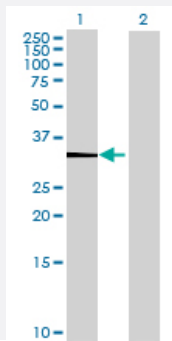
Size 100 uL

## Applications



### SDS-PAGE Gel

PRSS21 transfected lysate.



### Western Blot

Lane 1: PRSS21 transfected lysate ( 34.65 KDa)

Lane 2: Non-transfected lysate.

## Specification

Transfected Cell Line	293T
Plasmid	pCMV-PRSS21 full-length
Host	Human
Theoretical MW (kDa)	34.65
Interspecies Antigen Sequence	Mouse (64); Rat (62)

**Quality Control Testing**

Transient overexpression cell lysate was tested with Anti-PRSS21 antibody ([H00010942-B01](#)) by Western Blots.  
SDS-PAGE Gel  
PRSS21 transfected lysate.  
Western Blot  
Lane 1: PRSS21 transfected lysate ( 34.65 KDa)  
Lane 2: Non-transfected lysate.

**Storage Buffer**

1X Sample Buffer (50 mM Tris-HCl, 2% SDS, 10% glycerol, 300 mM 2-mercaptoethanol, 0.01% Bromophenol blue)

**Storage Instruction**

Store at -80°C. Aliquot to avoid repeated freezing and thawing.

## Applications

- Western Blot

## Gene Info — PRSS21

**Entrez GeneID**[10942](#)**GeneBank Accession#**[NM\\_006799.2](#)**Protein Accession#**[NP\\_006790.1](#)**Gene Name**

PRSS21

**Gene Alias**

ESP-1, ESP1, TEST1, TESTISIN

**Gene Description**

protease, serine, 21 (testisin)

**Omim ID**[608159](#)**Gene Ontology**[Hyperlink](#)**Gene Summary**

This gene encodes a cell-surface anchored serine protease, which is a member of the trypsin family of serine proteases. It is predicted to be active on peptide linkages involving the carboxyl group of lysine or arginine. The protein localizes to the cytoplasm and the plasma membrane of premeiotic testicular germ cells and it may be involved in progression of testicular tumors of germ cell origin. Alternative splicing of this gene results in three transcript variants encoding three different isoforms. [provided by RefSeq]

**Other Designations**

serine protease from eosinophils|testisin