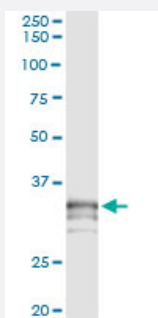


PRSS21 (Human) IP-WB Antibody Pair

Catalog # H00010942-PW1

Size 1 Set

Applications



Immunoprecipitation of PRSS21 transfected lysate using mouse monoclonal anti-PRSS21 and Protein A Magnetic Bead ([U0007](#)), and immunoblotted with rabbit polyclonal anti-PRSS21.

Specification

Product Description	This IP-WB antibody pair set comes with one antibody for immunoprecipitation and another to detect the precipitated protein in western blot.
Reactivity	Human
Interspecies Antigen Sequence	Mouse (64); Rat (62)
Quality Control Testing	Immunoprecipitation-Western Blot (IP-WB) Immunoprecipitation of PRSS21 transfected lysate using mouse monoclonal anti-PRSS21 and Protein A Magnetic Bead (U0007), and immunoblotted with rabbit polyclonal anti-PRSS21.
Supplied Product	Antibody pair set content: 1. Antibody pair for IP: mouse monoclonal anti-PRSS21 (300 ug) 2. Antibody pair for WB: rabbit polyclonal anti-PRSS21 (50 ul)
Storage Instruction	Store reagents of the antibody pair set at -20°C or lower. Please aliquot to avoid repeated freeze thaw cycle. Reagents should be returned to -20°C storage immediately after use.

Applications

- Immunoprecipitation-Western Blot

[Protocol Download](#)

Gene Info — PRSS21

Entrez GeneID	10942
---------------	-----------------------

Gene Name	PRSS21
-----------	--------

Gene Alias	ESP-1, ESP1, TEST1, TESTISIN
------------	------------------------------

Gene Description	protease, serine, 21 (testisin)
------------------	---------------------------------

Omim ID	608159
---------	------------------------

Gene Ontology	Hyperlink
---------------	---------------------------

Gene Summary	<p>This gene encodes a cell-surface anchored serine protease, which is a member of the trypsin family of serine proteases. It is predicted to be active on peptide linkages involving the carboxyl group of lysine or arginine. The protein localizes to the cytoplasm and the plasma membrane of premeiotic testicular germ cells and it may be involved in progression of testicular tumors of germ cell origin. Alternative splicing of this gene results in three transcript variants encoding three different isoforms. [provided by RefSeq]</p>
--------------	---

Other Designations	serine protease from eosinophils testisin
--------------------	---