

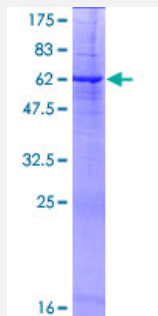
Full-Length

PRSS21 (Human) Recombinant Protein (P01)

Catalog # H00010942-P01

Size 25 ug, 10 ug

Applications



Specification

Product Description

Human PRSS21 full-length ORF (NP_006790.1, 1 a.a. - 314 a.a.) recombinant protein with GST-tag at N-terminal.

Sequence

MGARGALLLALLLARAGLRKPESQEAAPLSGPCGRRVITSRVGGEDAELGRWPWQGSLRLWDS
HVCGVSLLSHRWALTAAHCFETYSDLSDPGWMVQFGQLTSMPSFWSLQAYYTRYFVSNMYLSP
RYLGNSPYDIALVKLSAPVTYTKHIQPICLQASTFEFENRTDCWVTGWGYKEDEALPSPHTLQEVQ
VAIINNSMCNHLFLKYFRKDIFGDMVCAGNAQGGKDACFGDSGGPLACNKNGLWYQIGVVSWG
VGCGRPNRPGVYTNISHHFEWIKLMAQSGMSQPDPSWPLLFFPLLWALPLLGPV

Host

Wheat Germ (in vitro)

Theoretical MW (kDa)

61.3

Interspecies Antigen Sequence

Mouse (64); Rat (62)

Preparation Method

[in vitro wheat germ expression system](#)

Purification

Glutathione Sepharose 4 Fast Flow

Quality Control Testing

12.5% SDS-PAGE Stained with Coomassie Blue.

Storage Buffer

50 mM Tris-HCl, 10 mM reduced Glutathione, pH=8.0 in the elution buffer.

Storage Instruction

Store at -80°C. Aliquot to avoid repeated freezing and thawing.

Note

Best use within three months from the date of receipt of this protein.

Applications

- Enzyme-linked Immunoabsorbent Assay
- Western Blot (Recombinant protein)
- Antibody Production
- Protein Array

Gene Info — PRSS21

Entrez GeneID[10942](#)**GeneBank Accession#**[NM_006799.2](#)**Protein Accession#**[NP_006790.1](#)**Gene Name**

PRSS21

Gene Alias

ESP-1, ESP1, TEST1, TESTISIN

Gene Description

protease, serine, 21 (testisin)

Omim ID[608159](#)**Gene Ontology**[Hyperlink](#)**Gene Summary**

This gene encodes a cell-surface anchored serine protease, which is a member of the trypsin family of serine proteases. It is predicted to be active on peptide linkages involving the carboxyl group of lysine or arginine. The protein localizes to the cytoplasm and the plasma membrane of premeiotic testicular germ cells and it may be involved in progression of testicular tumors of germ cell origin. Alternative splicing of this gene results in three transcript variants encoding three different isoforms. [provided by RefSeq]

Other Designations

serine protease from eosinophils|testisin