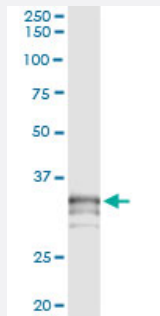


PRSS21 monoclonal antibody (M01), clone 2E10

Catalog # H00010942-M01

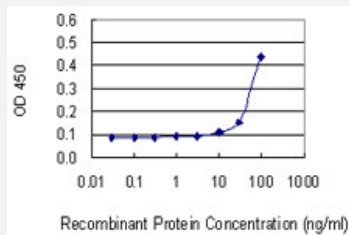
Size 100 ug

Applications



Immunoprecipitation

Immunoprecipitation of PRSS21 transfected lysate using anti-PRSS21 monoclonal antibody and Protein A Magnetic Bead, and immunoblotted with PRSS21 MaxPab rabbit polyclonal antibody.



Sandwich ELISA (Recombinant protein)

Detection limit for recombinant GST tagged PRSS21 is 10 ng/ml as a capture antibody.

Specification

Product Description	Mouse monoclonal antibody raised against a partial recombinant PRSS21.
Immunogen	PRSS21 (NP_006790, 121 a.a. ~ 220 a.a) partial recombinant protein with GST tag. MW of the GST tag alone is 26 KDa.
Sequence	VSNMYSPLYLGNSPYDIALVKLSAPVTYTKHIQICLQASTFEFENRTDCWWTGWGYKEDALPSP HTLQEVQVAIINNSMCNHLFLKYSFRKDFGD
Host	Mouse
Reactivity	Human

Interspecies Antigen Sequence	Mouse (64); Rat (62)
Isotype	IgG1 Kappa
Quality Control Testing	Antibody Reactive Against Recombinant Protein.
Storage Buffer	In 1x PBS, pH 7.4
Storage Instruction	Store at -20°C or lower. Aliquot to avoid repeated freezing and thawing.

Applications

- Immunoprecipitation

Immunoprecipitation of PRSS21 transfected lysate using anti-PRSS21 monoclonal antibody and Protein A Magnetic Bead, and immunoblotted with PRSS21 MaxPab rabbit polyclonal antibody.

[Protocol Download](#)

- Sandwich ELISA (Recombinant protein)

Detection limit for recombinant GST tagged PRSS21 is 10 ng/ml as a capture antibody.

[Protocol Download](#)

- ELISA

Gene Info — PRSS21

Entrez GeneID	10942
GeneBank Accession#	NM_006799
Protein Accession#	NP_006790
Gene Name	PRSS21
Gene Alias	ESP-1, ESP1, TEST1, TESTISIN
Gene Description	protease, serine, 21 (testisin)
Omim ID	608159
Gene Ontology	Hyperlink

Gene Summary

This gene encodes a cell-surface anchored serine protease, which is a member of the trypsin family of serine proteases. It is predicted to be active on peptide linkages involving the carboxyl group of lysine or arginine. The protein localizes to the cytoplasm and the plasma membrane of premeiotic testicular germ cells and it may be involved in progression of testicular tumors of germ cell origin. Alternative splicing of this gene results in three transcript variants encoding three different isoforms. [provided by RefSeq]

Other Designations

serine protease from eosinophils|testisin