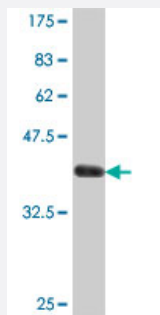


# PRSS21 polyclonal antibody (A01)

Catalog # H00010942-A01

Size 50 uL

## Applications



Western Blot detection against Immunogen (37.11 KDa) .

## Specification

<b>Product Description</b>	Mouse polyclonal antibody raised against a partial recombinant PRSS21.
<b>Immunogen</b>	PRSS21 (NP_006790, 121 a.a. ~ 220 a.a) partial recombinant protein with GST tag.
<b>Sequence</b>	VSNMYSPLYLGNSPYDIALVKLSAPVTYTKHIQICLQASTFEFENRTDCWWTGWGYKEDALPSP HTLQEVQVAIINNSMCNHLFLKYSFRKDIFGD
<b>Host</b>	Mouse
<b>Reactivity</b>	Human
<b>Interspecies Antigen Sequence</b>	Mouse (64); Rat (62)
<b>Quality Control Testing</b>	Antibody Reactive Against Recombinant Protein. Western Blot detection against Immunogen (37.11 KDa) .
<b>Storage Buffer</b>	50 % glycerol
<b>Storage Instruction</b>	Store at -20°C or lower. Aliquot to avoid repeated freezing and thawing.

## Applications

- Western Blot (Recombinant protein)

[Protocol Download](#)

- ELISA

## Gene Info — PRSS21

Entrez GeneID [10942](#)

GeneBank Accession# [NM\\_006799](#)

Protein Accession# [NP\\_006790](#)

Gene Name PRSS21

Gene Alias ESP-1, ESP1, TEST1, TESTISIN

Gene Description protease, serine, 21 (testisin)

Omim ID [608159](#)

Gene Ontology [Hyperlink](#)

**Gene Summary** This gene encodes a cell-surface anchored serine protease, which is a member of the trypsin family of serine proteases. It is predicted to be active on peptide linkages involving the carboxyl group of lysine or arginine. The protein localizes to the cytoplasm and the plasma membrane of premeiotic testicular germ cells and it may be involved in progression of testicular tumors of germ cell origin. Alternative splicing of this gene results in three transcript variants encoding three different isoforms. [provided by RefSeq]

**Other Designations** serine protease from eosinophils|testisin