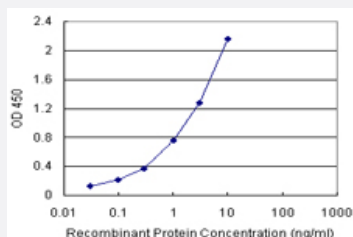


RALBP1 (Human) Matched Antibody Pair

Catalog # H00010928-AP11

Size 1 Set

Applications



Sandwich ELISA detection sensitivity ranging from 0.03 ng/ml to 100 ng/ml.

Specification

Product Description	This antibody pair set comes with a matched antibody pair to detect and quantify the protein level of human RALBP1.
Reactivity	Human
Interspecies Antigen Sequence	Mouse (91); Rat (91)
Quality Control Testing	Standard curve using recombinant protein (H00010928-P01) as an analyte. Sandwich ELISA detection sensitivity ranging from 0.03 ng/ml to 100 ng/ml.
Supplied Product	Antibody pair set content: 1. Capture antibody: rabbit MaxPab® affinity purified polyclonal anti-RALBP1 (100 ug) 2. Detection antibody: mouse monoclonal anti-RALBP1, IgG2b Kappa (20 ug) *Reagents are sufficient for at least 1-2 x 96 well plates using recommended protocols.
Storage Instruction	Store reagents of the antibody pair set at -20°C or lower. Please aliquot to avoid repeated freeze thaw cycle. Reagents should be returned to -20°C storage immediately after use.

Applications

- [ELISA Pair \(Recombinant protein\)](#)

[Protocol Download](#)

Gene Info — RALBP1

Entrez GeneID	10928
Gene Name	RALBP1
Gene Alias	RIP1, RLIP1, RLIP76
Gene Description	ralA binding protein 1
Omim ID	605801
Gene Ontology	Hyperlink
Other Designations	OTTHUMP00000162351 ral-interacting protein 1 ralA-binding protein 1

Pathway

- [Pancreatic cancer](#)
- [Pathways in cancer](#)

Disease

- [Epilepsy](#)