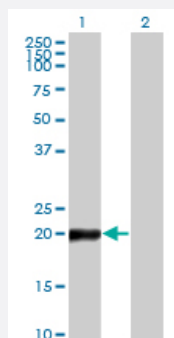


# COPS8 monoclonal antibody (M04), clone 2G8

Catalog # H00010920-M04

Size 100 ug

## Applications



### Western Blot (Transfected lysate)

Western Blot analysis of COPS8 expression in transfected 293T cell line by COPS8 monoclonal antibody (M04), clone 2G8.

Lane 1: COPS8 transfected lysate(23.2 KDa).

Lane 2: Non-transfected lysate.



Western Blot detection against Immunogen (48.73 KDa) .

## Specification

### Product Description

Mouse monoclonal antibody raised against a full-length recombinant COPS8.

### Immunogen

COPS8 (AAH03090, 1 a.a. ~ 209 a.a) full-length recombinant protein with GST tag. MW of the GST tag alone is 26 KDa.

### Sequence

MPVAVMAESAFSFKKLLDQCENQELEAPGGIATPPVYGQLLALYLLHNDMNNARYLWKRIIPPAIK  
SANSELGGWSVGQRWQRDFPGIYTTINAHQWSETVQPIMEALRDATRRRAFALVSQAYTSIADD  
FAAFVGLPVVEEAVKGILEQQGWQADSTTRMVLPRKPVAGALDVSFNKFIPLSEPAPVPPIPNEQQL  
ARLTDYVAFLEN

### Host

Mouse

### Reactivity

Human

<b>Interspecies Antigen Sequence</b>	Mouse (95); Rat (95)
<b>Isotype</b>	IgG2a Kappa
<b>Quality Control Testing</b>	Antibody Reactive Against Recombinant Protein. Western Blot detection against Immunogen (48.73 KDa) .
<b>Storage Buffer</b>	In 1x PBS, pH 7.4
<b>Storage Instruction</b>	Store at -20°C or lower. Aliquot to avoid repeated freezing and thawing.

## Applications

- Western Blot (Transfected lysate)

Western Blot analysis of COPS8 expression in transfected 293T cell line by COPS8 monoclonal antibody (M04), clone 2G8.

Lane 1: COPS8 transfected lysate(23.2 KDa).

Lane 2: Non-transfected lysate.

[Protocol Download](#)

- Western Blot (Recombinant protein)

[Protocol Download](#)

- ELISA

## Gene Info — COPS8

<b>Entrez GeneID</b>	<a href="#">10920</a>
<b>GeneBank Accession#</b>	<a href="#">BC003090</a>
<b>Protein Accession#</b>	<a href="#">AAH03090</a>
<b>Gene Name</b>	COPS8
<b>Gene Alias</b>	COP9, CSN8, MGC1297, MGC43256, SGN8
<b>Gene Description</b>	COP9 constitutive photomorphogenic homolog subunit 8 (Arabidopsis)
<b>Gene Ontology</b>	<a href="#">Hyperlink</a>

**Gene Summary**

The protein encoded by this gene is one of the eight subunits of COP9 signalosome, a highly conserved protein complex that functions as an important regulator in multiple signaling pathways. The structure and function of COP9 signalosome is similar to that of the 19S regulatory particle of 26S proteasome. COP9 signalosome has been shown to interact with SCF-type E3 ubiquitin ligases and act as a positive regulator of E3 ubiquitin ligases. Alternatively spliced transcript variants encoding distinct isoforms have been observed. [provided by RefSeq]

**Other Designations**

COP9 signalosome subunit 8