

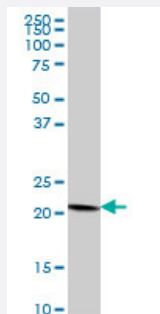
MaxPab®

COPS8 purified MaxPab mouse polyclonal antibody (B02P)

Catalog # H00010920-B02P

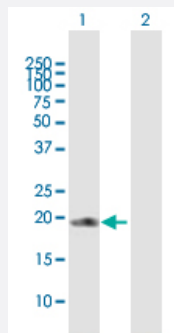
Size 50 ug

Applications



Western Blot (Tissue lysate)

COPS8 MaxPab polyclonal antibody. Western Blot analysis of COPS8 expression in human kidney.

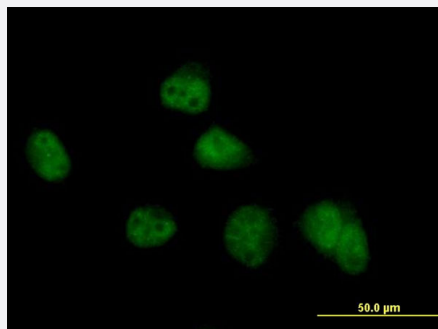


Western Blot (Transfected lysate)

Western Blot analysis of COPS8 expression in transfected 293T cell line ([H00010920-T02](#)) by COPS8 MaxPab polyclonal antibody.

Lane 1: COPS8 transfected lysate(22.99 KDa).

Lane 2: Non-transfected lysate.



Immunofluorescence

Immunofluorescence of purified MaxPab antibody to COPS8 on HeLa cell. [antibody concentration 10 ug/ml]

Specification

Product Description

Mouse polyclonal antibody raised against a full-length human COPS8 protein.

Immunogen	COPS8 (NP_006701.1, 1 a.a. ~ 209 a.a) full-length human protein.
Sequence	MPVAVMAESAFSFKKLLDQCENQELEAPGGIATPPVYGQLLALYLLHNDMNNARYLWKRIPPAIK SANSELGGWSVGQRWQRDFPGIYTTINAHQWSETVQPIMEALRDATRRRAFALVSQAYTSIADD FAAFVGLPVVEEAVKGILEQQWQADSTTRMVLPRKPVAGALDVSFNKFIPLSEPAPVPPIPNEQQL ARLTDYVAFLEN
Host	Mouse
Reactivity	Human
Interspecies Antigen Sequence	Mouse (95); Rat (95)
Quality Control Testing	Antibody reactive against mammalian transfected lysate.
Storage Buffer	In 1x PBS, pH 7.4
Storage Instruction	Store at -20°C or lower. Aliquot to avoid repeated freezing and thawing.

Applications

- Western Blot (Tissue lysate)

COPS8 MaxPab polyclonal antibody. Western Blot analysis of COPS8 expression in human kidney.

[Protocol Download](#)

- Western Blot (Transfected lysate)

Western Blot analysis of COPS8 expression in transfected 293T cell line ([H00010920-T02](#)) by COPS8 MaxPab polyclonal antibody.

Lane 1: COPS8 transfected lysate(22.99 KDa).

Lane 2: Non-transfected lysate.

[Protocol Download](#)

- Immunofluorescence

Immunofluorescence of [purified](#) MaxPab antibody to COPS8 on HeLa cell. [antibody concentration 10 ug/ml]

Gene Info — COPS8

Entrez GeneID [10920](#)

GeneBank Accession# [NM_006710.4](#)

Protein Accession#	NP_006701.1
Gene Name	COPS8
Gene Alias	COP9, CSN8, MGC1297, MGC43256, SGN8
Gene Description	COP9 constitutive photomorphogenic homolog subunit 8 (Arabidopsis)
Gene Ontology	Hyperlink
Gene Summary	<p>The protein encoded by this gene is one of the eight subunits of COP9 signalosome, a highly conserved protein complex that functions as an important regulator in multiple signaling pathways. The structure and function of COP9 signalosome is similar to that of the 19S regulatory particle of 26 S proteasome. COP9 signalosome has been shown to interact with SCF-type E3 ubiquitin ligases and act as a positive regulator of E3 ubiquitin ligases. Alternatively spliced transcript variants encoding distinct isoforms have been observed. [provided by RefSeq]</p>
Other Designations	COP9 signalosome subunit 8