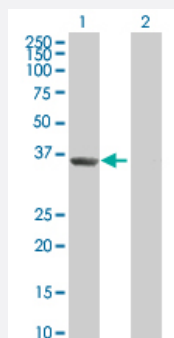


# SUGT1 293T Cell Transient Overexpression Lysate(Denatured)

Catalog # H00010910-T01

Size 100 uL

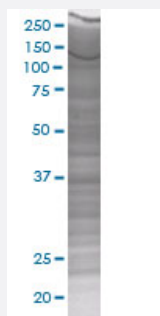
## Applications



### Western Blot

Lane 1: SUGT1 transfected lysate ( 37.8 kDa)

Lane 2: Non-transfected lysate.



### SDS-PAGE Gel

SUGT1 transfected lysate.

## Specification

Transfected Cell Line	293T
Plasmid	pCMV-SUGT1 full-length
Host	Human
Theoretical MW (kDa)	36.74
Interspecies Antigen Sequence	Mouse (86); Rat (86)

## Quality Control Testing

Transient overexpression cell lysate was tested with Anti-SUGT1 antibody ([H00010910-B01](#)) by Western Blots.

Western Blot

Lane 1: SUGT1 transfected lysate ( 37.8 KDa)

Lane 2: Non-transfected lysate.

SDS-PAGE Gel

SUGT1 transfected lysate.

## Storage Buffer

1X Sample Buffer (50 mM Tris-HCl, 2% SDS, 10% glycerol, 300 mM 2-mercaptoethanol, 0.01% Bromophenol blue)

## Storage Instruction

Store at -80°C. Aliquot to avoid repeated freezing and thawing.

## Applications

- Western Blot

## Gene Info — SUGT1

## Entrez GeneID

[10910](#)

## GeneBank Accession#

[NM\\_006704](#)

## Protein Accession#

[NP\\_006695](#)

## Gene Name

SUGT1

## Gene Alias

SGT1

## Gene Description

SGT1, suppressor of G2 allele of SKP1 (S. cerevisiae)

## Omim ID

[604098](#)

## Gene Ontology

[Hyperlink](#)

## Gene Summary

This gene is homologous to the yeast gene SGT1, which encodes a protein involved in kinetochore function and required for the G1/S and G2/M transitions. Complementation studies suggest that the human protein has similar functions. Two transcript variants encoding different isoforms have been found for this gene. [provided by RefSeq]

## Other Designations

OTTHUMP00000040878|OTTHUMP00000178679|SGT1B protein|suppressor of G2 allele of SKP1|suppressor of G2 allele of SKP1, S. cerevisiae, homolog of