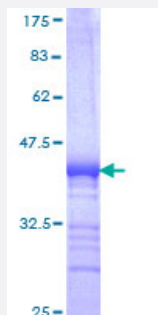


SUGT1 (Human) Recombinant Protein (Q01)

Catalog # H00010910-Q01

Size 25 ug, 10 ug

Applications



Specification

Product Description	Human SUGT1 partial ORF (NP_006695, 151 a.a. - 260 a.a.) recombinant protein with GST-tag at N-terminal.
Sequence	VVITLMIKNVQKNDVNVEFSEKELSALVKLPSGEDYNLKLELLHPIIPEQSTFKVLSTKIEIKLKKPEA VRWEKLEGQGDVPTPKQFVADVKNLYPSSSPYTRNWDKLVG
Host	Wheat Germ (in vitro)
Theoretical MW (kDa)	37.84
Interspecies Antigen Sequence	Mouse (86); Rat (86)
Preparation Method	in vitro wheat germ expression system
Purification	Glutathione Sepharose 4 Fast Flow
Quality Control Testing	12.5% SDS-PAGE Stained with Coomassie Blue.
Storage Buffer	50 mM Tris-HCl, 10 mM reduced Glutathione, pH=8.0 in the elution buffer.
Storage Instruction	Store at -80°C. Aliquot to avoid repeated freezing and thawing.
Note	Best use within three months from the date of receipt of this protein.

Applications

- Enzyme-linked Immunoabsorbent Assay
- Western Blot (Recombinant protein)
- Antibody Production
- Protein Array

Gene Info — SUGT1

Entrez GeneID [10910](#)

GeneBank Accession# [NM_006704](#)

Protein Accession# [NP_006695](#)

Gene Name SUGT1

Gene Alias SGT1

Gene Description SGT1, suppressor of G2 allele of SKP1 (S. cerevisiae)

Omim ID [604098](#)

Gene Ontology [Hyperlink](#)

Gene Summary This gene is homologous to the yeast gene SGT1, which encodes a protein involved in kinetochor e function and required for the G1/S and G2/M transitions. Complementation studies suggest that the human protein has similar functions. Two transcript variants encoding different isoforms have been found for this gene. [provided by RefSeq]

Other Designations OTTHUMP00000040878|OTTHUMP00000178679|SGT1B protein|suppressor of G2 allele of SK P1|suppressor of G2 allele of SKP1, S. cerevisiae, homolog of