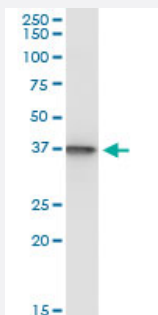


SUGT1 (Human) IP-WB Antibody Pair

Catalog # H00010910-PW1

Size 1 Set

Applications



Immunoprecipitation of SUGT1 transfected lysate using mouse monoclonal anti-SUGT1 and Protein A Magnetic Bead ([U0007](#)), and immunoblotted with mouse monoclonal anti-SUGT1.

Specification

Product Description	This IP-WB antibody pair set comes with one antibody for immunoprecipitation and another to detect the precipitated protein in western blot.
Reactivity	Human
Interspecies Antigen Sequence	Mouse (86); Rat (86)
Quality Control Testing	Immunoprecipitation-Western Blot (IP-WB) Immunoprecipitation of SUGT1 transfected lysate using mouse monoclonal anti-SUGT1 and Protein A Magnetic Bead (U0007), and immunoblotted with mouse monoclonal anti-SUGT1.
Supplied Product	Antibody pair set content: 1. Antibody pair for IP: mouse monoclonal anti-SUGT1 (300 ug) 2. Antibody pair for WB: mouse monoclonal anti-SUGT1 (50 ug)
Storage Instruction	Store reagents of the antibody pair set at -20°C or lower. Please aliquot to avoid repeated freeze thaw cycle. Reagents should be returned to -20°C storage immediately after use.

Applications

- Immunoprecipitation-Western Blot

[Protocol Download](#)

Gene Info — SUGT1

Entrez GeneID	10910
---------------	-----------------------

Gene Name	SUGT1
-----------	-------

Gene Alias	SGT1
------------	------

Gene Description	SGT1, suppressor of G2 allele of SKP1 (S. cerevisiae)
------------------	---

Omim ID	604098
---------	------------------------

Gene Ontology	Hyperlink
---------------	---------------------------

Gene Summary	This gene is homologous to the yeast gene SGT1, which encodes a protein involved in kinetochor e function and required for the G1/S and G2/M transitions. Complementation studies suggest that the human protein has similar functions. Two transcript variants encoding different isoforms have been found for this gene. [provided by RefSeq
--------------	--

Other Designations	OTTHUMP00000040878 OTTHUMP00000178679 SGT1B protein suppressor of G2 allele of SK P1 suppressor of G2 allele of SKP1, S. cerevisiae, homolog of
--------------------	---