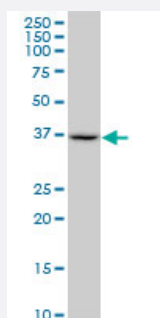


SUGT1 monoclonal antibody (M04), clone 1A10

Catalog # H00010910-M04

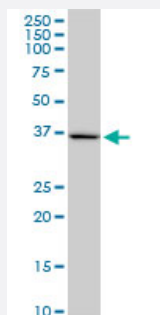
Size 100 ug

Applications



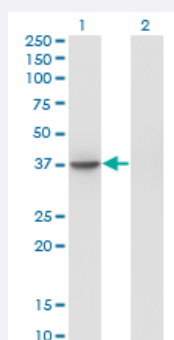
Western Blot (Cell lysate)

SUGT1 monoclonal antibody (M04), clone 1A10. Western Blot analysis of SUGT1 expression in Raw 264.7(Cat # L024V1).



Western Blot (Cell lysate)

SUGT1 monoclonal antibody (M04), clone 1A10. Western Blot analysis of SUGT1 expression in PC-12(Cat # L012V1).

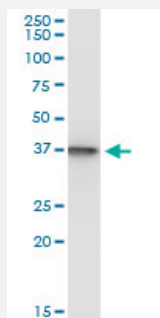


Western Blot (Transfected lysate)

Western Blot analysis of SUGT1 expression in transfected 293T cell line by SUGT1 monoclonal antibody (M04), clone 1A10.

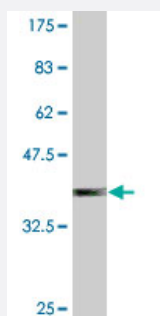
Lane 1: SUGT1 transfected lysate (Predicted MW: 37.8 KDa).

Lane 2: Non-transfected lysate.



Immunoprecipitation

Immunoprecipitation of SUGT1 transfected lysate using anti-SUGT1 monoclonal antibody and Protein A Magnetic Bead, and immunoblotted with SUGT1 monoclonal antibody.



Western Blot detection against Immunogen (37.84 KDa) .

Specification

Product Description	Mouse monoclonal antibody raised against a partial recombinant SUGT1.
Immunogen	SUGT1 (NP_006695, 151 a.a. ~ 260 a.a) partial recombinant protein with GST tag. MW of the GST tag alone is 26 KDa.
Sequence	VVITLMIKNVQKNDVNVEFSEKELSALVKLPSGEDYNLKLELLHPIPEQSTFKVLSTKIEIKLKKPEA VRWEKLEGQGDVPTPKQFVADVKNLYPSSSPYTRNWDKLVG
Host	Mouse
Reactivity	Human, Mouse, Rat
Interspecies Antigen Sequence	Mouse (86); Rat (86)
Isotype	IgG3 Kappa
Quality Control Testing	Antibody Reactive Against Recombinant Protein. Western Blot detection against Immunogen (37.84 KDa) .
Storage Buffer	In 1x PBS, pH 7.4
Storage Instruction	Store at -20°C or lower. Aliquot to avoid repeated freezing and thawing.

Applications

- Western Blot (Cell lysate)

SUGT1 monoclonal antibody (M04), clone 1A10. Western Blot analysis of SUGT1 expression in Raw 264.7 (Cat # L024V1).

[Protocol Download](#)

- Western Blot (Cell lysate)

SUGT1 monoclonal antibody (M04), clone 1A10. Western Blot analysis of SUGT1 expression in PC-12 (Cat # L012V1).

[Protocol Download](#)

- Western Blot (Transfected lysate)

Western Blot analysis of SUGT1 expression in transfected 293T cell line by SUGT1 monoclonal antibody (M04), clone 1A10.

Lane 1: SUGT1 transfected lysate (Predicted MW: 37.8 KDa).

Lane 2: Non-transfected lysate.

[Protocol Download](#)

- Western Blot (Recombinant protein)

[Protocol Download](#)

- Immunoprecipitation

Immunoprecipitation of SUGT1 transfected lysate using anti-SUGT1 monoclonal antibody and Protein A Magnetic Bead, and immunoblotted with SUGT1 monoclonal antibody.

[Protocol Download](#)

- ELISA

Gene Info — SUGT1

Entrez GeneID	10910
GeneBank Accession#	NM_006704
Protein Accession#	NP_006695
Gene Name	SUGT1
Gene Alias	SGT1

Gene Description	SGT1, suppressor of G2 allele of SKP1 (S. cerevisiae)
Omim ID	604098
Gene Ontology	Hyperlink
Gene Summary	This gene is homologous to the yeast gene SGT1, which encodes a protein involved in kinetochor e function and required for the G1/S and G2/M transitions. Complementation studies suggest that the human protein has similar functions. Two transcript variants encoding different isoforms have been found for this gene. [provided by RefSeq]
Other Designations	OTTHUMP00000040878 OTTHUMP00000178679 SGT1B protein suppressor of G2 allele of SK P1 suppressor of G2 allele of SKP1, S. cerevisiae, homolog of