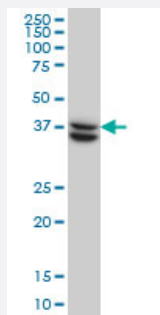


SUGT1 monoclonal antibody (M03), clone 6G5

Catalog # H00010910-M03

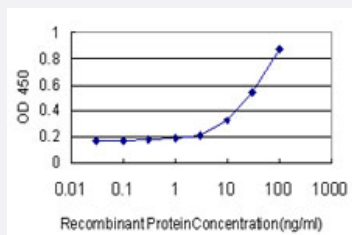
Size 100 ug

Applications



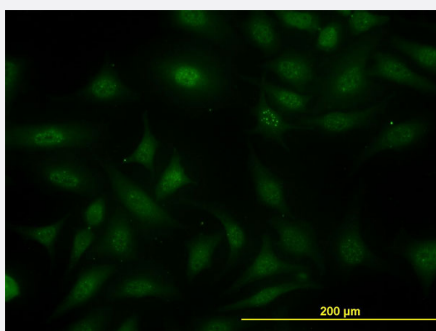
Western Blot (Cell lysate)

SUGT1 monoclonal antibody (M03), clone 6G5 Western Blot analysis of SUGT1 expression in HeLa (Cat # L013V1).



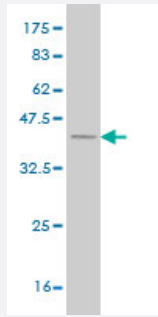
Sandwich ELISA (Recombinant protein)

Detection limit for recombinant GST tagged SUGT1 is approximately 3ng/ml as a capture antibody.



Immunofluorescence

Immunofluorescence of monoclonal antibody to SUGT1 on HeLa cell. [antibody concentration 10 ug/ml]



Western Blot detection against Immunogen (37.84 KDa) .

Specification

Product Description	Mouse monoclonal antibody raised against a partial recombinant SUGT1.
Immunogen	SUGT1 (NP_006695, 151 a.a. ~ 260 a.a) partial recombinant protein with GST tag. MW of the GST tag alone is 26 KDa.
Sequence	VVITLMIKNVQKNDVNVEFSEKELSALVKLPSGEDYNLKLELLHPIPEQSTFKVLSTKIEIKLKKPEA VRWEKLEGQGDVPTPKQFVADVKNLYPSSSPYTRNWDKLVG
Host	Mouse
Reactivity	Human
Interspecies Antigen Sequence	Mouse (86); Rat (86)
Isotype	IgG3 Kappa
Quality Control Testing	Antibody Reactive Against Recombinant Protein. Western Blot detection against Immunogen (37.84 KDa) .
Storage Buffer	In 1x PBS, pH 7.4
Storage Instruction	Store at -20°C or lower. Aliquot to avoid repeated freezing and thawing.

Applications

- Western Blot (Cell lysate)

SUGT1 monoclonal antibody (M03), clone 6G5 Western Blot analysis of SUGT1 expression in HeLa (Cat # L013V1).

[Protocol Download](#)

- Western Blot (Recombinant protein)

[Protocol Download](#)

- Sandwich ELISA (Recombinant protein)

Detection limit for recombinant GST tagged SUGT1 is approximately 3ng/ml as a capture antibody.

[Protocol Download](#)

- ELISA

- Immunofluorescence

Immunofluorescence of monoclonal antibody to SUGT1 on HeLa cell. [antibody concentration 10 ug/ml]

Gene Info — SUGT1

Entrez GeneID [10910](#)

GeneBank Accession# [NM_006704](#)

Protein Accession# [NP_006695](#)

Gene Name SUGT1

Gene Alias SGT1

Gene Description SGT1, suppressor of G2 allele of SKP1 (S. cerevisiae)

Omim ID [604098](#)

Gene Ontology [Hyperlink](#)

Gene Summary This gene is homologous to the yeast gene SGT1, which encodes a protein involved in kinetochor e function and required for the G1/S and G2/M transitions. Complementation studies suggest that the human protein has similar functions. Two transcript variants encoding different isoforms have been found for this gene. [provided by RefSeq]

Other Designations OTTHUMP00000040878|OTTHUMP00000178679|SGT1B protein|suppressor of G2 allele of SK P1|suppressor of G2 allele of SKP1, S. cerevisiae, homolog of