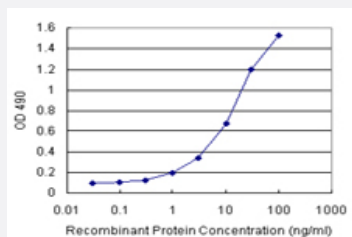


SUGT1 (Human) Matched Antibody Pair

Catalog # H00010910-AP11

Size 1 Set

Applications



Sandwich ELISA detection sensitivity ranging from 1 ng/ml to 100 ng/ml.

Specification

Product Description	This antibody pair set comes with a matched antibody pair to detect and quantify the protein level of human SUGT1.
Reactivity	Human
Interspecies Antigen Sequence	Mouse (86); Rat (86)
Quality Control Testing	Standard curve using recombinant protein (H00010910-P01) as an analyte. Sandwich ELISA detection sensitivity ranging from 1 ng/ml to 100 ng/ml.
Supplied Product	Antibody pair set content: 1. Capture antibody: rabbit MaxPab® affinity purified polyclonal anti-SUGT1 (100 ug) 2. Detection antibody: mouse monoclonal anti-SUGT1, IgG3 Kappa (20 ug) *Reagents are sufficient for at least 1-2 x 96 well plates using recommended protocols.
Storage Instruction	Store reagents of the antibody pair set at -20°C or lower. Please aliquot to avoid repeated freeze thaw cycle. Reagents should be returned to -20°C storage immediately after use.

Applications

- ELISA Pair (Recombinant protein)

[Protocol Download](#)

Gene Info — SUGT1

Entrez GeneID [10910](#)

Gene Name SUGT1

Gene Alias SGT1

Gene Description SGT1, suppressor of G2 allele of SKP1 (S. cerevisiae)

Omim ID [604098](#)

Gene Ontology [Hyperlink](#)

Gene Summary This gene is homologous to the yeast gene SGT1, which encodes a protein involved in kinetochore function and required for the G1/S and G2/M transitions. Complementation studies suggest that the human protein has similar functions. Two transcript variants encoding different isoforms have been found for this gene. [provided by RefSeq]

Other Designations OTTHUMP00000040878|OTTHUMP00000178679|SGT1B protein|suppressor of G2 allele of SKP1|suppressor of G2 allele of SKP1, S. cerevisiae, homolog of