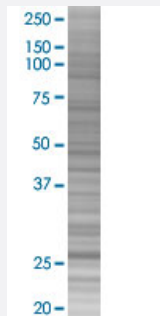


CPSF4 293T Cell Transient Overexpression Lysate(Denatured)

Catalog # H00010898-T03

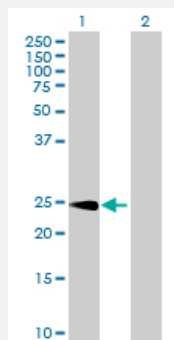
Size 100 uL

Applications



SDS-PAGE Gel

CPSF4 transfected lysate.



Western Blot

Lane 1: CPSF4 transfected lysate (27.40 KDa)

Lane 2: Non-transfected lysate.

Specification

Transfected Cell Line	293T
Plasmid	pCMV-CPSF4 full-length
Host	Human
Theoretical MW (kDa)	27.4
Interspecies Antigen Sequence	Mouse (85); Rat (98)

Quality Control Testing

Transient overexpression cell lysate was tested with Anti-CPSF4 antibody ([H00010898-B02P](#)) by Western Blots.
SDS-PAGE Gel
CPSF4 transfected lysate.
Western Blot
Lane 1: CPSF4 transfected lysate (27.40 KDa)
Lane 2: Non-transfected lysate.

Storage Buffer

1X Sample Buffer (50 mM Tris-HCl, 2% SDS, 10% glycerol, 300 mM 2-mercaptoethanol, 0.01% Bromophenol blue)

Storage Instruction

Store at -80°C. Aliquot to avoid repeated freezing and thawing.

Applications

- Western Blot

Gene Info — CPSF4

Entrez GeneID

[10898](#)

GeneBank Accession#

[BC050738](#)

Protein Accession#

[AAH50738.1](#)

Gene Name

CPSF4

Gene Alias

CPSF30, NAR, NEB1

Gene Description

cleavage and polyadenylation specific factor 4, 30kDa

Omim ID

[603052](#)

Gene Ontology

[Hyperlink](#)

Gene Summary

Inhibition of the nuclear export of poly(A)-containing mRNAs caused by the influenza A virus NS1 protein requires its effector domain. The NS1 effector domain functionally interacts with the cellular 30 kDa subunit of cleavage and polyadenylation specific factor 4, an essential component of the 3' end processing machinery of cellular pre-mRNAs. In influenza virus-infected cells, the NS1 protein is physically associated with cleavage and polyadenylation specific factor 4, 30kD subunit. Binding of the NS1 protein to the 30 kDa protein in vitro prevents CPSF binding to the RNA substrate and inhibits 3' end cleavage and polyadenylation of host pre-mRNAs. Thus the NS1 protein selectively inhibits the nuclear export of cellular, and not viral, mRNAs. Multiple alternatively spliced transcript variants that encode different isoforms have been described for this gene. [provided by RefSeq]

Other Designations

cleavage-polyadenylation specificity factor, 30kD|no arches-like zinc finger protein

Disease

- [Cardiovascular Diseases](#)
- [Diabetes Mellitus](#)
- [Edema](#)