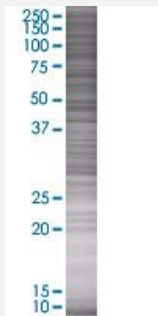


MALT1 293T Cell Transient Overexpression Lysate(Denatured)

Catalog # H00010892-T01

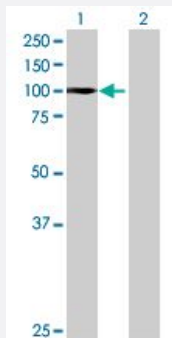
Size 100 uL

Applications



SDS-PAGE Gel

MALT1 transfected lysate.



Western Blot

Lane 1: MALT1 transfected lysate (89.54 KDa)

Lane 2: Non-transfected lysate.

Specification

Transfected Cell Line	293T
Plasmid	pCMV-MALT1 full-length
Host	Human
Theoretical MW (kDa)	89.54
Interspecies Antigen Sequence	Mouse (87); Rat (86)

Quality Control Testing

Transient overexpression cell lysate was tested with Anti-MALT1 antibody ([H00010892-B01](#)) by Western Blots.
 SDS-PAGE Gel
 MALT1 transfected lysate.
 Western Blot
 Lane 1: MALT1 transfected lysate (89.54 KDa)
 Lane 2: Non-transfected lysate.

Storage Buffer

1X Sample Buffer (50 mM Tris-HCl, 2% SDS, 10% glycerol, 300 mM 2-mercaptoethanol, 0.01% Bromophenol blue)

Storage Instruction

Store at -80°C. Aliquot to avoid repeated freezing and thawing.

Applications

- Western Blot

Gene Info — MALT1

Entrez GeneID

[10892](#)

GeneBank Accession#

[NM_173844](#)

Protein Accession#

[NP_776216](#)

Gene Name

MALT1

Gene Alias

DKFZp434L132, MLT, MLT1

Gene Description

mucosa associated lymphoid tissue lymphoma translocation gene 1

Omim ID

[604860](#)

Gene Ontology

[Hyperlink](#)

Gene Summary

This gene has been found to be recurrently rearranged in chromosomal translocation with two other genes - baculoviral IAP repeat-containing protein 3 (also known as apoptosis inhibitor 2) and immunoglobulin heavy chain locus - in mucosa-associated lymphoid tissue lymphomas. The protein encoded by this gene may play a role in NF-kappaB activation. Two alternatively spliced transcript variants encoding different isoforms have been described for this gene. [provided by RefSeq]

Other Designations

MALT associated translocation|MALT-lymphoma associated translocation|caspase-like protein|mucosa associated lymphoid tissue lymphoma translocation protein 1|paracaspase

Pathway

- [B cell receptor signaling pathway](#)
- [T cell receptor signaling pathway](#)

Disease

- [Gastritis](#)
- [Genetic Predisposition to Disease](#)
- [Helicobacter Infections](#)
- [Lymphoma](#)
- [Stomach Neoplasms](#)