

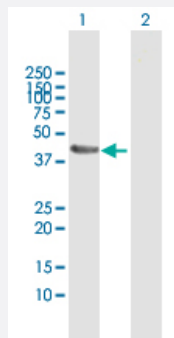
MaxPab®

ACTL7B MaxPab rabbit polyclonal antibody (D01)

Catalog # H00010880-D01

Size 100 uL

Applications

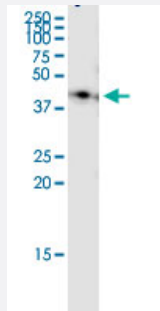


Western Blot (Transfected lysate)

Western Blot analysis of ACTL7B expression in transfected 293T cell line ([H00010880-T01](#)) by ACTL7B MaxPab polyclonal antibody.

Lane 1: ACTL7B transfected lysate(45.2 KDa).

Lane 2: Non-transfected lysate.



Immunoprecipitation

Immunoprecipitation of ACTL7B transfected lysate using anti-ACTL7B MaxPab rabbit polyclonal antibody and Protein A Magnetic Bead, and immunoblotted with ACTL7B purified MaxPab mouse polyclonal antibody (B01P) ([H00010880-B01P](#)).

Specification

Product Description

Rabbit polyclonal antibody raised against a full-length human ACTL7B protein.

Immunogen

ACTL7B (NP_006677.1, 1 a.a. ~ 415 a.a) full-length human protein.

Sequence

MATRNSPMPLGTAQGDGPGEAGTRPGPDASLRDTGAATQLKMKPRKVHKKAVIIDLGSQYCKCGY
AGEPRPTYFISSTVGKRCPEAADAGDTRKWTLVGHELLNTEAPLKLVNPLKHGIVDWDVCVQDM
EYIFRTAMKILPEEHAVLVSDPPLSPSSNREKYAELMFETFGIPAMHVTSQSLLSIYSYGKTSGLVV
ESGHGVSHVVPISGDLVPLGLTSRADYAGGDLTNYLMQLLNEAGHAFTDDHLHIEHIKKKCCYAA
FLPEEELGLVPEELRVDYELPDGKLITIGQERFRCSEMLFQPSLAGSTQPGLPELTAACLGRCQD
TGFKEEMAANVLLCGGCTMLDGFPERFQRELSLLCPGDSPAVAAAPERKTSVWTGGSILASLQA
FQQLWVSKEEFEERGSVAISK

Host	Rabbit
Reactivity	Human
Interspecies Antigen Sequence	Mouse (85); Rat (87)
Quality Control Testing	Antibody reactive against mammalian transfected lysate.
Storage Buffer	No additive
Storage Instruction	Store at -20°C or lower. Aliquot to avoid repeated freezing and thawing.

Applications

- Western Blot (Transfected lysate)

Western Blot analysis of ACTL7B expression in transfected 293T cell line ([H00010880-T01](#)) by ACTL7B MaxPab polyclonal antibody.

Lane 1: ACTL7B transfected lysate(45.2 KDa).

Lane 2: Non-transfected lysate.

[Protocol Download](#)

- Immunoprecipitation

Immunoprecipitation of ACTL7B transfected lysate using anti-ACTL7B MaxPab rabbit polyclonal antibody and Protein A Magnetic Bead, and immunoblotted with ACTL7B purified MaxPab mouse polyclonal antibody (B01P) ([H00010880-B01P](#)).

[Protocol Download](#)

Gene Info — ACTL7B

Entrez GeneID	10880
GeneBank Accession#	NM_006686.2
Protein Accession#	NP_006677.1
Gene Name	ACTL7B
Gene Alias	-
Gene Description	actin-like 7B
Omim ID	604304

Gene Ontology

[Hyperlink](#)

Gene Summary

The protein encoded by this gene is a member of a family of actin-related proteins (ARPs) which share significant amino acid sequence identity to conventional actins. Both actins and ARPs have an actin fold, which is an ATP-binding cleft, as a common feature. The ARPs are involved in diverse cellular processes, including vesicular transport, spindle orientation, nuclear migration and chromatin remodeling. This gene (ACTL7B), and related gene, ACTL7A, are intronless, and are located approximately 4 kb apart in a head-to-head orientation within the familial dysautonomia candidate region on 9q31. Based on mutational analysis of the ACTL7B gene in patients with this disorder, it was concluded that it is unlikely to be involved in the pathogenesis of dysautonomia. Unlike ACTL7A, the ACTL7B gene is expressed predominantly in the testis, however, its exact function is not known. [provided by RefSeq]

Other Designations

OTTHUMP00000021867|actin-like 7-beta