

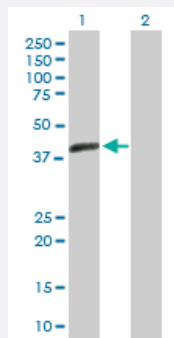
MaxPab®

ACTL7B purified MaxPab mouse polyclonal antibody (B01P)

Catalog # H00010880-B01P

Size 50 ug

Applications



Western Blot (Transfected lysate)

Western Blot analysis of ACTL7B expression in transfected 293T cell line ([H00010880-T01](#)) by ACTL7B MaxPab polyclonal antibody.

Lane 1: ACTL7B transfected lysate(45.65 KDa).

Lane 2: Non-transfected lysate.

Specification

Product Description	Mouse polyclonal antibody raised against a full-length human ACTL7B protein.
Immunogen	ACTL7B (NP_006677.1, 1 a.a. ~ 415 a.a) full-length human protein.
Sequence	MATRNPMPLGTAQGDPGEAGTRPGPDASLRDTGAATQLKMKPRKVHKKAVIIDLGSQYCKCGY AGEPRPTYFISSTVGKRCPEAADAGDTRKWTLVGHELLNTEAPLKLVNPLKHGMVVDWDCVQDM EYFRTAMKILPEEHAVLVSDPPLSPSSNREKYAELMFETFGIPAMHVTSQLLSIYSYGKTSGLVV ESGHGVSHVVPISGVDVLPGLTSRADYAGGDLTNYLMQLLNEAGHAFTDDHLHIIHIIKKCCYAA FLPEEELGLVPEELRVDYELPDGKLITIGQERFRCSEMLFQPSLAGSTQGPLPELTAACLGRCQD TGFKEEMAANVLLCGGCTMLDGFPERFQRELSLLCPGDSPAVAAAPERKTSVWTGGASILASLQA FQQLWWSKEEFEERGSVAISK
Host	Mouse
Reactivity	Human
Interspecies Antigen Sequence	Mouse (85); Rat (87)
Quality Control Testing	Antibody reactive against mammalian transfected lysate.
Storage Buffer	In 1x PBS, pH 7.4

Storage Instruction

Store at -20°C or lower. Aliquot to avoid repeated freezing and thawing.

Applications

- Western Blot (Transfected lysate)

Western Blot analysis of ACTL7B expression in transfected 293T cell line ([H00010880-T01](#)) by ACTL7B MaxPab polyclonal antibody.

Lane 1: ACTL7B transfected lysate(45.65 KDa).

Lane 2: Non-transfected lysate.

[Protocol Download](#)

Gene Info — ACTL7B

Entrez GeneID [10880](#)

GeneBank Accession# [NM_006686.2](#)

Protein Accession# [NP_006677.1](#)

Gene Name ACTL7B

Gene Alias -

Gene Description actin-like 7B

Omim ID [604304](#)

Gene Ontology [Hyperlink](#)

Gene Summary

The protein encoded by this gene is a member of a family of actin-related proteins (ARPs) which share significant amino acid sequence identity to conventional actins. Both actins and ARPs have an actin fold, which is an ATP-binding cleft, as a common feature. The ARPs are involved in diverse cellular processes, including vesicular transport, spindle orientation, nuclear migration and chromatin remodeling. This gene (ACTL7B), and related gene, ACTL7A, are intronless, and are located approximately 4 kb apart in a head-to-head orientation within the familial dysautonomia candidate region on 9q31. Based on mutational analysis of the ACTL7B gene in patients with this disorder, it was concluded that it is unlikely to be involved in the pathogenesis of dysautonomia. Unlike ACTL7A, the ACTL7B gene is expressed predominantly in the testis, however, its exact function is not known. [provided by RefSeq]

Other Designations OTTHUMP00000021867|actin-like 7-beta