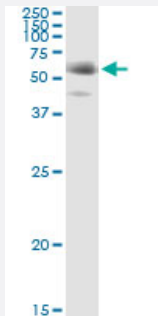


# FGL2 (Human) IP-WB Antibody Pair

Catalog # H00010875-PW1

Size 1 Set

## Applications



Immunoprecipitation of FGL2 transfected lysate using mouse monoclonal anti-FGL2 and Protein A Magnetic Bead ([U0007](#)), and immunoblotted with rabbit polyclonal anti-FGL2.

## Specification

<b>Product Description</b>	This IP-WB antibody pair set comes with one antibody for immunoprecipitation and another to detect the precipitated protein in western blot.
<b>Reactivity</b>	Human
<b>Interspecies Antigen Sequence</b>	Mouse (77); Rat (77)
<b>Quality Control Testing</b>	Immunoprecipitation-Western Blot (IP-WB) Immunoprecipitation of FGL2 transfected lysate using mouse monoclonal anti-FGL2 and Protein A Magnetic Bead ( <a href="#">U0007</a> ), and immunoblotted with rabbit polyclonal anti-FGL2.
<b>Supplied Product</b>	Antibody pair set content: 1. Antibody pair for IP: mouse monoclonal anti-FGL2 (300 ug) 2. Antibody pair for WB: rabbit polyclonal anti-FGL2 (50 ul)
<b>Storage Instruction</b>	Store reagents of the antibody pair set at -20°C or lower. Please aliquot to avoid repeated freeze thaw cycle. Reagents should be returned to -20°C storage immediately after use.

## Applications

- Immunoprecipitation-Western Blot

[Protocol Download](#)

## Gene Info — FGL2

**Entrez GeneID** [10875](#)

**Gene Name** FGL2

**Gene Alias** T49, pT49

**Gene Description** fibrinogen-like 2

**Omim ID** [605351](#)

**Gene Ontology** [Hyperlink](#)

**Gene Summary** The protein encoded by this gene is a secreted protein that is similar to the beta- and gamma-chains of fibrinogen. The carboxyl-terminus of the encoded protein consists of the fibrinogen-related domains (FRED). The encoded protein forms a tetrameric complex which is stabilized by interchain disulfide bonds. This protein may play a role in physiologic functions at mucosal sites. [provided by RefSeq]

**Other Designations** fibrinogen-like protein 2|fibroleukin

## Disease

- [Genetic Predisposition to Disease](#)
- [Periodontitis](#)
- [Severe Acute Respiratory Syndrome](#)