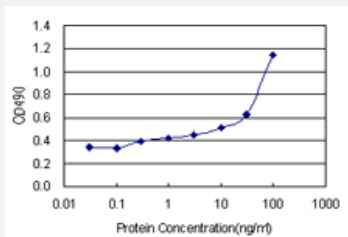


FGL2 (Human) Matched Antibody Pair

Catalog # H00010875-AP11

Size 1 Set

Applications



Sandwich ELISA detection sensitivity ranging from 10 ng/ml to 100 ng/ml.

Specification

Product Description	This antibody pair set comes with a matched antibody pair to detect and quantify the protein level of human FGL2.
Reactivity	Human
Interspecies Antigen Sequence	Mouse (77); Rat (77)
Quality Control Testing	Standard curve using recombinant protein (H00010875-P01) as an analyte. Sandwich ELISA detection sensitivity ranging from 10 ng/ml to 100 ng/ml.
Supplied Product	Antibody pair set content: 1. Capture antibody: rabbit MaxPab® affinity purified polyclonal anti-FGL2 (100 ug) 2. Detection antibody: mouse monoclonal anti-FGL2, IgG2a Kappa (20 ug) *Reagents are sufficient for at least 1-2 x 96 well plates using recommended protocols.
Storage Instruction	Store reagents of the antibody pair set at -20°C or lower. Please aliquot to avoid repeated freeze thaw cycle. Reagents should be returned to -20°C storage immediately after use.

Applications

- ELISA Pair (Recombinant protein)

[Protocol Download](#)

Gene Info — FGL2

Entrez GeneID [10875](#)

Gene Name FGL2

Gene Alias T49, pT49

Gene Description fibrinogen-like 2

Omim ID [605351](#)

Gene Ontology [Hyperlink](#)

Gene Summary The protein encoded by this gene is a secreted protein that is similar to the beta- and gamma-chains of fibrinogen. The carboxyl-terminus of the encoded protein consists of the fibrinogen-related domains (FRED). The encoded protein forms a tetrameric complex which is stabilized by interchain disulfide bonds. This protein may play a role in physiologic functions at mucosal sites. [provided by RefSeq]

Other Designations fibrinogen-like protein 2|fibroleukin

Disease

- [Genetic Predisposition to Disease](#)
- [Periodontitis](#)
- [Severe Acute Respiratory Syndrome](#)