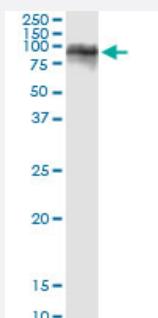


LILRB1 (Human) IP-WB Antibody Pair

Catalog # H00010859-PW1

Size 1 Set

Applications



Immunoprecipitation of LILRB1 transfected lysate using rabbit polyclonal anti-LILRB1 and Protein A Magnetic Bead ([U0007](#)), and immunoblotted with mouse purified polyclonal anti-LILRB1.

Specification

Product Description	This IP-WB antibody pair set comes with one antibody for immunoprecipitation and another to detect the precipitated protein in western blot.
Reactivity	Human
Quality Control Testing	Immunoprecipitation-Western Blot (IP-WB) Immunoprecipitation of LILRB1 transfected lysate using rabbit polyclonal anti-LILRB1 and Protein A Magnetic Bead (U0007), and immunoblotted with mouse purified polyclonal anti-LILRB1.
Supplied Product	Antibody pair set content: 1. Antibody pair for IP: rabbit polyclonal anti-LILRB1 (300 ul) 2. Antibody pair for WB: mouse purified polyclonal anti-LILRB1 (50 ug)
Storage Instruction	Store reagents of the antibody pair set at -20°C or lower. Please aliquot to avoid repeated freeze thaw cycle. Reagents should be returned to -20°C storage immediately after use.

Applications

- Immunoprecipitation-Western Blot

[Protocol Download](#)

Gene Info — LILRB1

Entrez GeneID	10859
Gene Name	LILRB1
Gene Alias	CD85, CD85J, FLJ37515, ILT2, LIR-1, LIR1, MIR-7, MIR7
Gene Description	leukocyte immunoglobulin-like receptor, subfamily B (with TM and ITIM domains), member 1
Omim ID	604811
Gene Ontology	Hyperlink
Gene Summary	<p>This gene is a member of the leukocyte immunoglobulin-like receptor (LIR) family, which is found in a gene cluster at chromosomal region 19q13.4. The encoded protein belongs to the subfamily B class of LIR receptors which contain two or four extracellular immunoglobulin domains, a transmembrane domain, and two to four cytoplasmic immunoreceptor tyrosine-based inhibitory motifs (ITIMs). The receptor is expressed on immune cells where it binds to MHC class I molecules on antigen-presenting cells and transduces a negative signal that inhibits stimulation of an immune response. It is thought to control inflammatory responses and cytotoxicity to help focus the immune response and limit autoreactivity. Multiple transcript variants encoding different isoforms have been found for this gene. [provided by RefSeq]</p>
Other Designations	CD85 antigen lg-like transcript 2 OTTHUMP00000068384 OTTHUMP00000068385 OTTHUMP00000068386 OTTHUMP00000068408 immunoglobulin-like transcript 2 leukocyte lg-like receptor-1 leukocyte immunoglobulin-like receptor 1 leukocyte immunoglobulin-like receptor sub

Disease

- [Arthritis](#)
- [Cardiovascular Diseases](#)
- [Diabetes Mellitus](#)
- [Edema](#)
- [Genetic Predisposition to Disease](#)