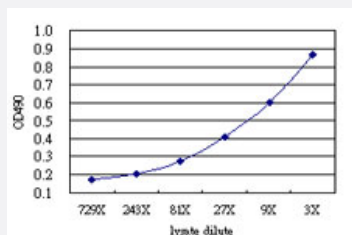


LILRB1 (Human) Matched Antibody Pair

Catalog # H00010859-AP51

Size 1 Set

Applications



Sandwich ELISA detection sensitivity ranging from approximately 729x to 3x dilution of the LILRB1 293T overexpression lysate (non-denatured).

Specification

Product Description	This antibody pair set comes with a matched antibody pair to detect and quantify the protein level of human LILRB1.
Reactivity	Human
Quality Control Testing	Standard curve using LILRB1 293T overexpression lysate (non-denatured) as an analyte. Sandwich ELISA detection sensitivity ranging from approximately 729x to 3x dilution of the LILRB1 293T overexpression lysate (non-denatured).
Supplied Product	Antibody pair set content: 1. Capture antibody: mouse monoclonal anti-LILRB1 (100 ug) 2. Detection antibody: rabbit purified polyclonal anti-LILRB1 (50 ug) *Reagents are sufficient for at least 3-5 x 96 well plates using recommended protocols.
Storage Instruction	Store reagents of the antibody pair set at -20°C or lower. Please aliquot to avoid repeated freeze thaw cycle. Reagents should be returned to -20°C storage immediately after use.

Applications

- ELISA Pair (Transfected lysate)

[Protocol Download](#)

Gene Info — LILRB1

Entrez GeneID	10859
Gene Name	LILRB1
Gene Alias	CD85, CD85J, FLJ37515, ILT2, LIR-1, LIR1, MIR-7, MIR7
Gene Description	leukocyte immunoglobulin-like receptor, subfamily B (with TM and ITIM domains), member 1
Omim ID	604811
Gene Ontology	Hyperlink
Gene Summary	<p>This gene is a member of the leukocyte immunoglobulin-like receptor (LIR) family, which is found in a gene cluster at chromosomal region 19q13.4. The encoded protein belongs to the subfamily B class of LIR receptors which contain two or four extracellular immunoglobulin domains, a transmembrane domain, and two to four cytoplasmic immunoreceptor tyrosine-based inhibitory motifs (ITIMs). The receptor is expressed on immune cells where it binds to MHC class I molecules on antigen-presenting cells and transduces a negative signal that inhibits stimulation of an immune response. It is thought to control inflammatory responses and cytotoxicity to help focus the immune response and limit autoreactivity. Multiple transcript variants encoding different isoforms have been found for this gene. [provided by RefSeq]</p>
Other Designations	CD85 antigen lg-like transcript 2 OTTHUMP00000068384 OTTHUMP00000068385 OTTHUMP0000068386 OTTHUMP00000068408 immunoglobulin-like transcript 2 leukocyte lg-like receptor-1 leukocyte immunoglobulin-like receptor 1 leukocyte immunoglobulin-like receptor sub

Disease

- [Arthritis](#)
- [Cardiovascular Diseases](#)
- [Diabetes Mellitus](#)
- [Edema](#)
- [Genetic Predisposition to Disease](#)