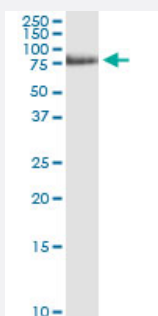


# WASF3 (Human) IP-WB Antibody Pair

Catalog # H00010810-PW1

Size 1 Set

## Applications



Immunoprecipitation of WASF3 transfected lysate using rabbit polyclonal anti-WASF3 and Protein A Magnetic Bead ([U0007](#)), and immunoblotted with mouse purified polyclonal anti-WASF3.

## Specification

<b>Product Description</b>	This IP-WB antibody pair set comes with one antibody for immunoprecipitation and another to detect the precipitated protein in western blot.
<b>Reactivity</b>	Human
<b>Interspecies Antigen Sequence</b>	Mouse (84)
<b>Quality Control Testing</b>	Immunoprecipitation-Western Blot (IP-WB) Immunoprecipitation of WASF3 transfected lysate using rabbit polyclonal anti-WASF3 and Protein A Magnetic Bead ( <a href="#">U0007</a> ), and immunoblotted with mouse purified polyclonal anti-WASF3.
<b>Supplied Product</b>	Antibody pair set content: 1. Antibody pair for IP: rabbit polyclonal anti-WASF3 (300 ul) 2. Antibody pair for WB: mouse purified polyclonal anti-WASF3 (50 ug)
<b>Storage Instruction</b>	Store reagents of the antibody pair set at -20°C or lower. Please aliquot to avoid repeated freeze thaw cycle. Reagents should be returned to -20°C storage immediately after use.

## Applications

- Immunoprecipitation-Western Blot

[Protocol Download](#)

## Gene Info — WASF3

**Entrez GeneID** [10810](#)

**Gene Name** WASF3

**Gene Alias** Brush-1, KIAA0900, SCAR3, WAVE3

**Gene Description** WAS protein family, member 3

**Omim ID** [605068](#)

**Gene Ontology** [Hyperlink](#)

**Gene Summary** This gene encodes a member of the Wiskott-Aldrich syndrome protein family. The gene product is a protein that forms a multiprotein complex that links receptor kinases and actin. Binding to actin occurs through a C-terminal verprolin homology domain in all family members. The multiprotein complex serves to transduce signals that involve changes in cell shape, motility or function. [provided by RefSeq]

**Other Designations** OTTHUMP00000018160|WASP family Verprolin-homologous protein 3

## Pathway

- [Adherens junction](#)
- [Fc gamma R-mediated phagocytosis](#)