

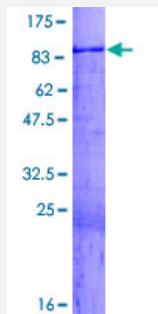
Full-Length

WASF3 (Human) Recombinant Protein (P01)

Catalog # H00010810-P01

Size 25 ug, 10 ug

Applications



Specification

Product Description

Human WASF3 full-length ORF (AAH50283.1, 1 a.a. - 499 a.a.) recombinant protein with GST-tag at N-terminal.

Sequence

MPLVKRNI EPRHLCRGALPEGITSELECVTNSTLAAIIRQLSSL SKHAEDIFGELFNEANNFYIRANSL
QDRIDRLAVKVTQLDSTVEEVSLQDINMKKAFKSSTVQDQQVVS KNSIPNPVADIYNQSDKPPPL
NILTPYRDDKKDGLKFYTDPSYFFDLWKEKMLQDTE DKRKEKRRQKREKHKLNPNRNQQVNV RK
VRTRKEEWERRKMGIEFMSDAKKLEQAGSAKEDRVPSGSHASDVTDYSYPATPNHSLHPQPVT
PSYAAGDVPPHPGASQAAEHEYRPPSASARHMA LNRPQQPPPPPPPPQAPEGSQASAPMAPAD
YGMLPAQII EYNPSGPPPPPPPPVIPS AQTA FVSPLQMPMQPPFPASASSTHAAPPHPSTGLL
VTAPPPPGPPPPPPGPPGPGSSLS SSPMHGPPVAEAKRQEP AQPPISDARS DLLAAIRMG IQLK
KVQE QREQEAKREPV GNDVATILSRRIAVEYSDSDDDSEFDENDWSD

Host

Wheat Germ (in vitro)

Theoretical MW (kDa)

81.4

Interspecies Antigen Sequence

Mouse (84)

Preparation Method

[in vitro wheat germ expression system](#)

Purification

Glutathione Sepharose 4 Fast Flow

Quality Control Testing

12.5% SDS-PAGE Stained with Coomassie Blue.

Storage Buffer	50 mM Tris-HCl, 10 mM reduced Glutathione, pH=8.0 in the elution buffer.
Storage Instruction	Store at -80°C. Aliquot to avoid repeated freezing and thawing.
Note	Best use within three months from the date of receipt of this protein.

Applications

- Enzyme-linked Immunoabsorbent Assay
- Western Blot (Recombinant protein)
- Antibody Production
- Protein Array

Gene Info — WASF3

Entrez GeneID	10810
GeneBank Accession#	BC050283.1
Protein Accession#	AAH50283.1
Gene Name	WASF3
Gene Alias	Brush-1, KIAA0900, SCAR3, WAVE3
Gene Description	WAS protein family, member 3
Omim ID	605068
Gene Ontology	Hyperlink
Gene Summary	This gene encodes a member of the Wiskott-Aldrich syndrome protein family. The gene product is a protein that forms a multiprotein complex that links receptor kinases and actin. Binding to actin occurs through a C-terminal verprolin homology domain in all family members. The multiprotein complex serves to transduce signals that involve changes in cell shape, motility or function. [provided by RefSeq]
Other Designations	OTTHUMP00000018160 WASP family Verprolin-homologous protein 3

Pathway

- [Adherens junction](#)
- [Fc gamma R-mediated phagocytosis](#)