

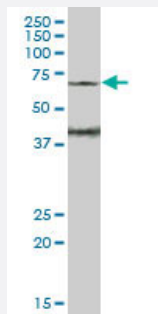
MaxPab®

# WASF3 purified MaxPab mouse polyclonal antibody (B01P)

Catalog # H00010810-B01P

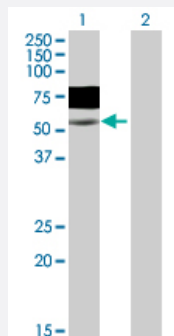
Size 50 ug

## Applications



### Western Blot (Tissue lysate)

WASF3 MaxPab polyclonal antibody. Western Blot analysis of WASF3 expression in rat brain.



### Western Blot (Transfected lysate)

Western Blot analysis of WASF3 expression in transfected 293T cell line ([H00010810-T01](#)) by WASF3 MaxPab polyclonal antibody.

Lane 1: WASF3 transfected lysate(54.89 KDa).

Lane 2: Non-transfected lysate.

## Specification

### Product Description

Mouse polyclonal antibody raised against a full-length human WASF3 protein.

### Immunogen

WASF3 (AAH50283.1, 1 a.a. ~ 499 a.a) full-length human protein.

### Sequence

MPLVKRNIEPRHLCRGALPEGITSELECVTNSTLAAIIRQLSSLSKHAEDIFGELFNEANNFYIRANSL  
QDRIDRLAVKVTQLDSTVEEVSLQDINMKKAFKSSTVQDQQVVSKNIPNPVADIYNQSDKPPPL  
NILTPYRDDKKDGLKFYTDPSYFFDLWKEKMLQDTEKRRQKREKHKLNPNRNQVNVVRK  
VRTRKEEWERRKMGIEFMSDAKKLEQAGSAKEDRVPSGSHASDVTDYSYPATPNHSLHPQPVT  
PSYAAGDVPPHGPASQAAEHEYRPPSASARHMAALNRPQQPPPPPPPPQAPEGSQASAPMAPAD  
YGMLPAQIIIEYNPSGPPPPPPPPVIPSAQTAQFVSPLQMPMQPPFPASASSTHAAPHPSTGLL  
VTAPPPPGPPPPPPGPPGSSSLSSPMHGPPVAEAKRQEPAPPPISDARSDLLAAIRMGILK  
KVQEQREREAKREPVGNDVATILSRRIAVEYSDSDDDSEFDENDWSD

Host	Mouse
Reactivity	Human, Rat
Interspecies Antigen Sequence	Mouse (84)
Quality Control Testing	Antibody reactive against mammalian transfected lysate.
Storage Buffer	In 1x PBS, pH 7.4
Storage Instruction	Store at -20°C or lower. Aliquot to avoid repeated freezing and thawing.

## Applications

- Western Blot (Tissue lysate)

WASF3 MaxPab polyclonal antibody. Western Blot analysis of WASF3 expression in rat brain.

[Protocol Download](#)

- Western Blot (Transfected lysate)

Western Blot analysis of WASF3 expression in transfected 293T cell line ([H00010810-T01](#)) by WASF3 MaxPab polyclonal antibody.

Lane 1: WASF3 transfected lysate(54.89 KDa).

Lane 2: Non-transfected lysate.

[Protocol Download](#)

## Gene Info — WASF3

Entrez GeneID	<a href="#">10810</a>
GeneBank Accession#	<a href="#">BC050283.1</a>
Protein Accession#	<a href="#">AAH50283.1</a>
Gene Name	WASF3
Gene Alias	Brush-1, KIAA0900, SCAR3, WAVE3
Gene Description	WAS protein family, member 3
Omim ID	<a href="#">605068</a>
Gene Ontology	<a href="#">Hyperlink</a>

**Gene Summary**

This gene encodes a member of the Wiskott-Aldrich syndrome protein family. The gene product is a protein that forms a multiprotein complex that links receptor kinases and actin. Binding to actin occurs through a C-terminal verprolin homology domain in all family members. The multiprotein complex serves to transduce signals that involve changes in cell shape, motility or function. [provided by RefSeq]

**Other Designations**

OTTHUMP00000018160|WASP family Verprolin-homologous protein 3

## Pathway

- [Adherens junction](#)
- [Fc gamma R-mediated phagocytosis](#)