

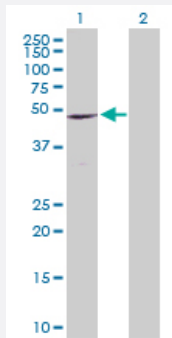
MaxPab®

# CCR9 purified MaxPab rabbit polyclonal antibody (D01P)

Catalog # H00010803-D01P

Size 100 ug

## Applications



### Western Blot (Transfected lysate)

Western Blot analysis of CCR9 expression in transfected 293T cell line ([H00010803-T02](#)) by CCR9 MaxPab polyclonal antibody.

Lane 1: CCR9 transfected lysate (42.00 KDa).

Lane 2: Non-transfected lysate.

## Specification

Product Description	Rabbit polyclonal antibody raised against a full-length human CCR9 protein.
Immunogen	CCR9 (NP_112477.1, 1 a.a. ~ 369 a.a) full-length human protein.
Sequence	MTPTDFTSPIPNMADDYGSESTSSMEDYVNFNFTDFYCEKNNVRQFASHFLPPLYWLVFIVGALG NSLVILVYWYCTRVKTMDFLLNLAIDLFLVTLPFWAIAAADQWKQTFMCKVVNSMYKMNFY SCVLLIMCISVDRYAIAQAMRAHTWREKRLLYSKMVCFTMWVLAALCIPEILYSQKEESGIAICTMV YPSDESTKLKSAVLTLKVILGFFLPFVVMACCYTIIHTLIQAKKSSKHKALKVTITVLTVFVLSQFPYN CILLVQTIDAYAMFISNCAVSTNIDICFQVTQTIAFFHSCLNPVLYFVGERFRRDLVKTLKNLGCISQ AQWVSFTRREGSLKLSSMLLETTSGALSL
Host	Rabbit
Reactivity	Human
Quality Control Testing	Antibody reactive against mammalian transfected lysate.
Storage Buffer	In 1x PBS, pH 7.4
Storage Instruction	Store at -20°C or lower. Aliquot to avoid repeated freezing and thawing.

## Applications

- Western Blot (Transfected lysate)

Western Blot analysis of CCR9 expression in transfected 293T cell line ([H00010803-T02](#)) by CCR9 MaxPab polyclonal antibody.

Lane 1: CCR9 transfected lysate(42.00 KDa).

Lane 2: Non-transfected lysate.

[Protocol Download](#)

## Gene Info — CCR9

Entrez GeneID [10803](#)

GeneBank Accession# [NM\\_031200](#)

Protein Accession# [NP\\_112477.1](#)

Gene Name CCR9

Gene Alias CDw199, GPR-9-6, GPR28

Gene Description chemokine (C-C motif) receptor 9

Omim ID [604738](#)

Gene Ontology [Hyperlink](#)

**Gene Summary**

The protein encoded by this gene is a member of the beta chemokine receptor family. It is predicted to be a seven transmembrane protein similar to G protein-coupled receptors. Chemokines and their receptors are key regulators of the thymocytes migration and maturation in normal and inflammation conditions. The specific ligand of this receptor is CCL25. It has been found that this gene is differentially expressed by T lymphocytes of small intestine and colon, suggested a role in the thymocytes recruitment and development that may permit functional specialization of immune responses in different segment of the gastrointestinal tract. This gene is mapped to the chemokine receptor gene cluster region. Two alternatively spliced transcript variants have been described. [provided by RefSeq]

**Other Designations** G protein-coupled receptor 28|OTTHUMP00000164653|OTTHUMP00000164654

## Pathway

- [Chemokine signaling pathway](#)
- [Cytokine-cytokine receptor interaction](#)

## Disease

- [Birth Weight](#)
- [Genetic Predisposition to Disease](#)
- [Glioblastoma](#)
- [Glioma](#)
- [Graft vs Host Disease](#)
- [HIV Infections](#)
- [Leukemia](#)
- [Meningeal Neoplasms](#)
- [Meningioma](#)
- [Skin Diseases](#)