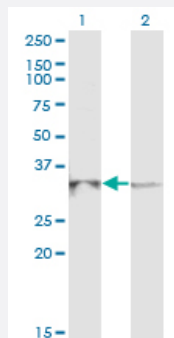


# RPP40 monoclonal antibody (M03), clone 1G8

Catalog # H00010799-M03

Size 100 ug

## Applications

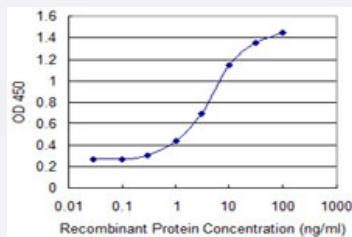


### Western Blot (Transfected lysate)

Western Blot analysis of RPP40 expression in transfected 293T cell line by RPP40 monoclonal antibody (M03), clone 1G8.

Lane 1: RPP40 transfected lysate (Predicted MW: 28 KDa).

Lane 2: Non-transfected lysate.



### Sandwich ELISA (Recombinant protein)

Detection limit for recombinant GST tagged RPP40 is 0.1 ng/ml as a capture antibody.

## Specification

<b>Product Description</b>	Mouse monoclonal antibody raised against a partial recombinant RPP40.
<b>Immunogen</b>	RPP40 (NP_006629, 295 a.a. ~ 363 a.a) partial recombinant protein with GST tag. MW of the GST tag alone is 26 KDa.
<b>Sequence</b>	EHLCHYFDEPKLAPWWTLSVQGFADSPVSWEKNEHGFRKGGEHLYNFVIFNNQDYWLQMAVGA NDHCPP
<b>Host</b>	Mouse
<b>Reactivity</b>	Human

Interspecies Antigen Sequence	Mouse (76); Rat (76)
Isotype	IgG2b Kappa
Quality Control Testing	Antibody Reactive Against Recombinant Protein.
Storage Buffer	In 1x PBS, pH 7.4
Storage Instruction	Store at -20°C or lower. Aliquot to avoid repeated freezing and thawing.

## Applications

- Western Blot (Transfected lysate)

Western Blot analysis of RPP40 expression in transfected 293T cell line by RPP40 monoclonal antibody (M03), clone 1G8.

Lane 1: RPP40 transfected lysate (Predicted MW: 28 KDa).

Lane 2: Non-transfected lysate.

[Protocol Download](#)

- Sandwich ELISA (Recombinant protein)

Detection limit for recombinant GST tagged RPP40 is 0.1 ng/ml as a capture antibody.

[Protocol Download](#)

- ELISA

## Gene Info — RPP40

Entrez GeneID	<a href="#">10799</a>
GeneBank Accession#	<a href="#">NM_006638</a>
Protein Accession#	<a href="#">NP_006629</a>
Gene Name	RPP40
Gene Alias	RNASEP1, bA428J1.3
Gene Description	ribonuclease P/MRP 40kDa subunit
Omim ID	<a href="#">606117</a>
Gene Ontology	<a href="#">Hyperlink</a>

**Gene Summary**

40kD subunit|ribonuclease P1

**Other Designations**

ribonuclease P (40 kD)|ribonuclease P 40kDa subunit|ribonuclease P, 40kD subunit|ribonuclease P1