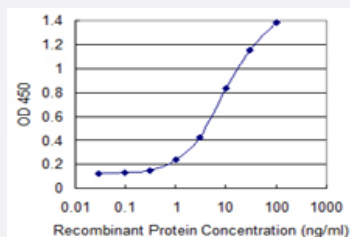


VAMP5 monoclonal antibody (M05), clone 3D4

Catalog # H00010791-M05

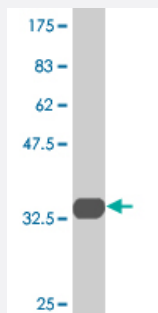
Size 100 ug

Applications



Sandwich ELISA (Recombinant protein)

Detection limit for recombinant GST tagged VAMP5 is 0.1 ng/ml as a capture antibody.



Western Blot detection against Immunogen (33.44 KDa) .

Specification

Product Description	Mouse monoclonal antibody raised against a partial recombinant VAMP5.
Immunogen	VAMP5 (NP_006625, 1 a.a. ~ 70 a.a) partial recombinant protein with GST tag. MW of the GST tag alone is 26 KDa.
Sequence	MAGIELERCQQQANEVTEIMRNNFGKVLERGKLAELQQRSDQLLDMSSTFNKTTQNLAQKKCW ENIRYR
Host	Mouse
Reactivity	Human

Interspecies Antigen Sequence	Mouse (74); Rat (72)
Isotype	IgG2a Kappa
Quality Control Testing	Antibody Reactive Against Recombinant Protein. Western Blot detection against Immunogen (33.44 KDa) .
Storage Buffer	In 1x PBS, pH 7.4
Storage Instruction	Store at -20°C or lower. Aliquot to avoid repeated freezing and thawing.

Applications

- Western Blot (Recombinant protein)

[Protocol Download](#)

- Sandwich ELISA (Recombinant protein)

Detection limit for recombinant GST tagged VAMP5 is 0.1 ng/ml as a capture antibody.

[Protocol Download](#)

- ELISA

Gene Info — VAMP5

Entrez GeneID	10791
GeneBank Accession#	NM_006634
Protein Accession#	NP_006625
Gene Name	VAMP5
Gene Alias	-
Gene Description	vesicle-associated membrane protein 5 (myobrevin)
Omim ID	607029
Gene Ontology	Hyperlink

Gene Summary

Synaptobrevins/VAMPs, syntaxins, and the 25-kD synaptosomal-associated protein are the main components of a protein complex involved in the docking and/or fusion of vesicles and cell membranes. The VAMP5 gene is a member of the vesicle-associated membrane protein (VAMP)/synaptobrevin family and the SNARE superfamily. This VAMP family member may participate in vesicle trafficking events that are associated with myogenesis. [provided by RefSeq]

Other Designations

myobrevin|vesicle-associated membrane protein 5

Pathway

- [SNARE interactions in vesicular transport](#)

Disease

- [Glaucoma](#)