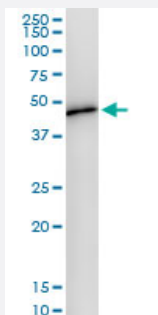


WDR4 (Human) IP-WB Antibody Pair

Catalog # H00010785-PW1

Size 1 Set

Applications



Immunoprecipitation of WDR4 transfected lysate using rabbit polyclonal anti-WDR4 and Protein A Magnetic Bead ([U0007](#)), and immunoblotted with mouse polyclonal anti-WDR4.

Specification

Product Description	This IP-WB antibody pair set comes with one antibody for immunoprecipitation and another to detect the precipitated protein in western blot.
Reactivity	Human
Interspecies Antigen Sequence	Mouse (71); Rat (68)
Quality Control Testing	Immunoprecipitation-Western Blot (IP-WB) Immunoprecipitation of WDR4 transfected lysate using rabbit polyclonal anti-WDR4 and Protein A Magnetic Bead (U0007), and immunoblotted with mouse polyclonal anti-WDR4.
Supplied Product	Antibody pair set content: 1. Antibody pair for IP: rabbit polyclonal anti-WDR4 (300 ul) 2. Antibody pair for WB: mouse polyclonal anti-WDR4 (50 ul)
Storage Instruction	Store reagents of the antibody pair set at -20°C or lower. Please aliquot to avoid repeated freeze thaw cycle. Reagents should be returned to -20°C storage immediately after use.

Applications

- Immunoprecipitation-Western Blot

[Protocol Download](#)

Gene Info — WDR4

Entrez GeneID [10785](#)

Gene Name WDR4

Gene Alias TRM82

Gene Description WD repeat domain 4

Omim ID [605924](#)

Gene Ontology [Hyperlink](#)

Gene Summary This gene encodes a member of the WD repeat protein family. WD repeats are minimally conserved regions of approximately 40 amino acids typically bracketed by gly-his and trp-aspartate (GH-WD), which may facilitate formation of heterotrimeric or multiprotein complexes. Members of this family are involved in a variety of cellular processes, including cell cycle progression, signal transduction, apoptosis, and gene regulation. This gene is excluded as a candidate for a form of nonsyndromic deafness (DFNB10), but is still a candidate for other disorders mapped to 21q22.3 as well as for the development of Down syndrome phenotypes. Two transcript variants encoding the same protein have been found for this gene. [provided by RefSeq]

Other Designations WD repeat domain 4 protein|WD repeat-containing protein 4