

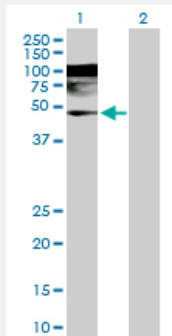
MaxPab®

WDR4 purified MaxPab rabbit polyclonal antibody (D01P)

Catalog # H00010785-D01P

Size 100 ug

Applications

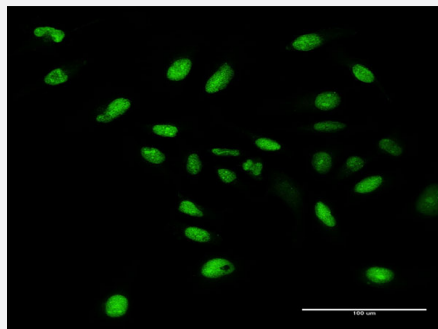


Western Blot (Transfected lysate)

Western Blot analysis of WDR4 expression in transfected 293T cell line ([H00010785-T02](#)) by WDR4 MaxPab polyclonal antibody.

Lane 1: WDR4 transfected lysate(45.50 KDa).

Lane 2: Non-transfected lysate.



Immunofluorescence

Immunofluorescence of purified MaxPab antibody to WDR4 on HeLa cell. [antibody concentration 10 ug/ml]

Specification

Product Description

Rabbit polyclonal antibody raised against a full-length human WDR4 protein.

Immunogen

WDR4 (NP_061139.2, 1 a.a. ~ 412 a.a) full-length human protein.

Sequence

MAGSVGLALCGQTLVVRGGSRLATSIASSDDDSLFDSCAAEKKSQENKGEDAPLDQGSGAIL
ASTFSKSGSYFALTDSSKRLILFRTKPWQCLSVRTVARRCTALTFIASEEKVLVADKSGDVYSFSV
LEPHGCGRLELGHLSMLLDVAVSPDDRFLITADRDEKIRVSWAAAPHSIESFCLGHTFVSRISVV
PTQPGLLSSSGDGTLLRLWEYRSGRQLHCCHLASLQELVDPQAPQKFAASRIAFWCQENCVALL
CDGTPVVYIFQLDARRQQLVYRQQLAFQHQVWDVAFEETQGLWVLQDCQEAPLVLYRPVGDQW
QSVPESTVLKKVSGVLRGNWAMLEGSAGADASFSSLYKATFDNVTSYLKKKEERLQQQLEKKQ
RRRSPPPGPDGHAKKMRPGEATLSC

Host	Rabbit
Reactivity	Human
Interspecies Antigen Sequence	Mouse (71); Rat (68)
Quality Control Testing	Antibody reactive against mammalian transfected lysate.
Storage Buffer	In 1x PBS, pH 7.4
Storage Instruction	Store at -20°C or lower. Aliquot to avoid repeated freezing and thawing.

Applications

- Western Blot (Transfected lysate)

Western Blot analysis of WDR4 expression in transfected 293T cell line ([H00010785-T02](#)) by WDR4 MaxPab polyclonal antibody.

Lane 1: WDR4 transfected lysate(45.50 KDa).

Lane 2: Non-transfected lysate.

[Protocol Download](#)

- Immunofluorescence

Immunofluorescence of purified MaxPab antibody to WDR4 on HeLa cell. [antibody concentration 10 ug/ml]

Gene Info — WDR4

Entrez GeneID	10785
GeneBank Accession#	NM_018669
Protein Accession#	NP_061139.2
Gene Name	WDR4
Gene Alias	TRM82
Gene Description	WD repeat domain 4
Omim ID	605924
Gene Ontology	Hyperlink

Gene Summary

This gene encodes a member of the WD repeat protein family. WD repeats are minimally conserved regions of approximately 40 amino acids typically bracketed by gly-his and trp-aspartate (GH-WD), which may facilitate formation of heterotrimeric or multiprotein complexes. Members of this family are involved in a variety of cellular processes, including cell cycle progression, signal transduction, apoptosis, and gene regulation. This gene is excluded as a candidate for a form of nonsyndromic deafness (DFNB10), but is still a candidate for other disorders mapped to 21q22.3 as well as for the development of Down syndrome phenotypes. Two transcript variants encoding the same protein have been found for this gene. [provided by RefSeq]

Other Designations

WD repeat domain 4 protein|WD repeat-containing protein 4