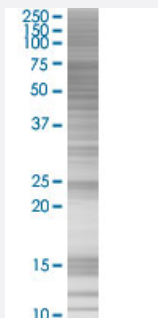


# HBS1L 293T Cell Transient Overexpression Lysate(Denatured)

Catalog # H00010767-T01

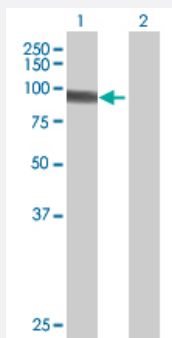
Size 100 uL

## Applications



### SDS-PAGE Gel

HBS1L transfected lysate.



### Western Blot

Lane 1: HBS1L transfected lysate ( 75.35 KDa)

Lane 2: Non-transfected lysate.

## Specification

Transfected Cell Line	293T
Plasmid	pCMV-HBS1L full-length
Host	Human
Theoretical MW (kDa)	75.35
Interspecies Antigen Sequence	Mouse (88); Rat (88)

## Quality Control Testing

Transient overexpression cell lysate was tested with Anti-HBS1L antibody ([H00010767-B01](#)) by Western Blots.  
 SDS-PAGE Gel  
 HBS1L transfected lysate.  
 Western Blot  
 Lane 1: HBS1L transfected lysate ( 75.35 KDa)  
 Lane 2: Non-transfected lysate.

## Storage Buffer

1X Sample Buffer (50 mM Tris-HCl, 2% SDS, 10% glycerol, 300 mM 2-mercaptoethanol, 0.01% Bromophenol blue)

## Storage Instruction

Store at -80°C. Aliquot to avoid repeated freezing and thawing.

## Applications

- Western Blot

## Gene Info — HBS1L

### Entrez GeneID

[10767](#)

### GeneBank Accession#

[NM\\_006620.2](#)

### Protein Accession#

-

### Gene Name

HBS1L

### Gene Alias

DKFZp686L13262, EF-1a, ERFS, HBS1, HSPC276

### Gene Description

HBS1-like (S. cerevisiae)

### Gene Ontology

[Hyperlink](#)

### Gene Summary

This gene encodes a member of the GTP-binding elongation factor family. It is expressed in multiple tissues with the highest expression in heart and skeletal muscle. The intergenic region of this gene and the MYB gene has been identified to be a quantitative trait locus (QTL) controlling fetal hemoglobin level, and this region influences erythrocyte, platelet, and monocyte counts as well as erythrocyte volume and hemoglobin content. DNA polymorphisms at this region associate with fetal hemoglobin levels and pain crises in sickle cell disease. A single nucleotide polymorphism in exon 1 of this gene is significantly associated with severity in beta-thalassemia/Hemoglobin E. Multiple alternatively spliced transcript variants encoding different protein isoforms have been found for this gene. [provided by RefSeq]

### Other Designations

HBS1-like|OTTHUMP00000017252

## Disease

- [alpha-Thalassemia](#)
- [Anemia](#)
- [beta-Thalassemia](#)
- [Hypertension](#)
- [Pain](#)
- [Thalassemia](#)