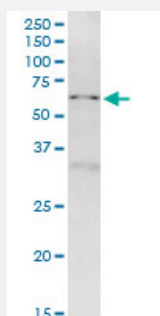


NUP50 monoclonal antibody (M01), clone 4H7

Catalog # H00010762-M01

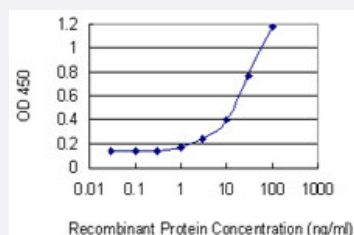
Size 100 ug

Applications



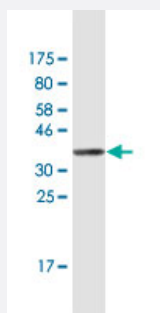
Western Blot (Cell lysate)

NUP50 monoclonal antibody (M01), clone 4H7. Western Blot analysis of NUP50 expression in HeLa S3 NE.



Sandwich ELISA (Recombinant protein)

Detection limit for recombinant GST tagged NUP50 is 0.3 ng/ml as a capture antibody.



Western Blot detection against Immunogen (36.52 KDa) .

Specification

Product Description

Mouse monoclonal antibody raised against a partial recombinant NUP50.

Immunogen	NUP50 (NP_705931.1, 342 a.a. ~ 439 a.a) partial recombinant protein with GST tag. MW of the GST tag alone is 26 KDa.
Sequence	DNEFKEKIGIGTLHLKPTANQKTQLLVRADTNLGNILLNVLIIPPNNMPCTRGTGKNNVLVLCVPNPPIDEK NATMPVTMLIRVKTSSEDADELHKILLEKGD
Host	Mouse
Reactivity	Human
Isotype	IgG2b Kappa
Quality Control Testing	Antibody Reactive Against Recombinant Protein. Western Blot detection against Immunogen (36.52 KDa) .
Storage Buffer	In 1x PBS, pH 7.4
Storage Instruction	Store at -20°C or lower. Aliquot to avoid repeated freezing and thawing.

Applications

- Western Blot (Cell lysate)

NUP50 monoclonal antibody (M01), clone 4H7. Western Blot analysis of NUP50 expression in Hela S3 NE.

[Protocol Download](#)

- Western Blot (Recombinant protein)

[Protocol Download](#)

- Sandwich ELISA (Recombinant protein)

Detection limit for recombinant GST tagged NUP50 is 0.3 ng/ml as a capture antibody.

[Protocol Download](#)

- ELISA

Gene Info — NUP50

Entrez GeneID	10762
GeneBank Accession#	NM_153645
Protein Accession#	NP_705931.1

Gene Name	NUP50
Gene Alias	MGC39961, NPAP60, NPAP60L
Gene Description	nucleoporin 50kDa
Omim ID	604646
Gene Ontology	Hyperlink
Gene Summary	<p>The nuclear pore complex is a massive structure that extends across the nuclear envelope, forming a gateway that regulates the flow of macromolecules between the nucleus and the cytoplasm. Nucleoporins are the main components of the nuclear pore complex in eukaryotic cells. The protein encoded by this gene is a member of the FG-repeat containing nucleoporins that functions as a soluble cofactor in importin-alpha:beta-mediated nuclear protein import. Pseudogenes of this gene are found on chromosomes 5, 6, and 14. Two transcript variants encoding different isoforms have been found for this gene. [provided by RefSeq]</p>
Other Designations	OTTHUMP00000028685 nuclear pore-associated protein 60L

Disease

- [Tobacco Use Disorder](#)