

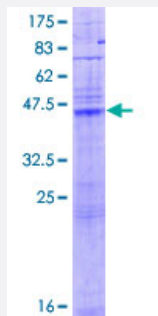
## Full-Length

# LASS1 (Human) Recombinant Protein (P01)

Catalog # H00010715-P01

Size 25 ug, 10 ug

## Applications



## Specification

### Product Description

Human LASS1 full-length ORF ( AAH84582.1, 1 a.a. - 239 a.a.) recombinant protein with GST-tag at N-terminal.

### Sequence

MPESAWKFLFYLGSWSYSAYLLFGTDYPFFHDPPSVFYDWTGMAVPRDIAAYLLQGSFYGHSI  
YATLYMDTWRKDSVVMLLHHVVTLLIVSSYAFRYHNVGILVFLHDISDVQLEFTKLNIFYKSRGGSY  
HRLHALAADLGCLSGFSWFWFRLYWFPLKVLATSHCSLRTVPDIPFYFFNALLLLTLMNLYW  
FLYVAFAAKVLTGQVHELKDLREYDTAEASLPSKAE

### Host

Wheat Germ (in vitro)

### Theoretical MW (kDa)

54.3

### Interspecies Antigen Sequence

Mouse (82); Rat (80)

### Preparation Method

[in vitro wheat germ expression system](#)

### Purification

Glutathione Sepharose 4 Fast Flow

### Quality Control Testing

12.5% SDS-PAGE Stained with Coomassie Blue.

### Storage Buffer

50 mM Tris-HCl, 10 mM reduced Glutathione, pH=8.0 in the elution buffer.

### Storage Instruction

Store at -80°C. Aliquot to avoid repeated freezing and thawing.

## Note

Best use within three months from the date of receipt of this protein.

## Applications

- Enzyme-linked Immunoabsorbent Assay
- Western Blot (Recombinant protein)
- Antibody Production
- Protein Array

## Gene Info — LASS1

Entrez GeneID [10715](#)

GeneBank Accession# [BC084582.1](#)

Protein Accession# [AAH84582.1](#)

Gene Name LASS1

Gene Alias CerS1, LAG1, MGC90349, UOG1

Gene Description LAG1 homolog, ceramide synthase 1

Omim ID [606919](#)

Gene Ontology [Hyperlink](#)

**Gene Summary** This gene encodes a member of the bone morphogenetic protein (BMP) family and the TGF-beta superfamily. This group of proteins is characterized by a polybasic proteolytic processing site that is cleaved to produce a mature protein containing seven conserved cysteine residues. Members of this family are regulators of cell growth and differentiation in both embryonic and adult tissues. Studies in yeast suggest that the encoded protein is involved in aging. This protein is transcribed from a monocistronic mRNA as well as a bicistronic mRNA, which also encodes growth differentiation factor 1. [provided by RefSeq]

**Other Designations** LAG1 longevity assurance homolog 1|longevity assurance (LAG1, S. cerevisiae) homolog 1|longevity assurance gene 1|upstream of GDF1